



Boston, MA Interconnect

| Zone | Cable HHs |
|-------------------------|----------------|
| Amesbury-Gloucester, MA | 29,102 |
| Beltway, MA | 55,348 |
| Beverly, MA* | 50,762 |
| Boston Coastal, MA | 79,365 |
| Boston Metro | 382,355 |
| Boston North, MA | 31,654 |
| Boston South, MA | 75,146 |
| Brattleboro, VT | 10,514 |
| Brockton, MA | 66,398 |
| Cambridge, MA | 40,570 |
| Cape Cod, MA | 106,472 |
| Concord, NH | 29,989 |
| Fitchburg, MA | 41,434 |
| Foxboro, MA* | 69,048 |
| Framingham, MA* | 60,026 |
| Haverhill, MA | 24,442 |
| Keene, NH | 14,148 |
| Laconia, NH | 30,592 |
| Lexington, MA* | 49,342 |
| Lowell, MA* | 80,321 |
| Boston DirecTV | 144,976 |
| Boston Dish | 36,703 |

| Zone | Cable HHs |
|---------------------------|----------------|
| Lynn, MA | 32,015 |
| Malden, MA* | 121,287 |
| Manchester, NH | 56,138 |
| Merrimack-Londonderry, NH | 58,638 |
| Middleboro, MA | 10,493 |
| Milford, MA* | 73,491 |
| Nashua, NH | 28,845 |
| Newburyport, MA | 14,831 |
| Newton, MA* | 96,712 |
| North Andover, MA* | 67,000 |
| Pepperell, MA | 8,610 |
| Plymouth, MA* | 91,972 |
| Quincy, MA | 49,399 |
| Revere, MA | 25,495 |
| Rochester, NH-Sanford, ME | 18,468 |
| Salem, NH | 28,572 |
| Scituate, MA | 41,962 |
| Seacoast, NH | 81,836 |
| Upper Cape & Island, MA | 51,976 |
| Woburn, MA* | 78,238 |
| Worcester, MA* | 145,715 |

Expanded Zones In Detail

Beverly, MA*
Ames-Glouc, MA (partial)
Haverhill, MA
Newburyport, MA (partial)

Foxboro, MA*
Brockton, MA (partial)
Quincy, MA (partial)
Framingham, MA*
Fitchburg, MA (partial)

Lexington, MA*
Pepperell, MA (partial)
Lowell, MA*

Malden, MA*
Cambridge, MA (partial)
Lynn, MA
Revere, MA (partial)

Milford, MA*
Newton, MA*
North Andover, MA*

Plymouth, MA*
Middleboro, MA
Scituate, MA (patial)
Woburn, MA*
Worcester, MA*



Thank You for Choosing National Media Spots, Inc.

We Appreciate Your Business!

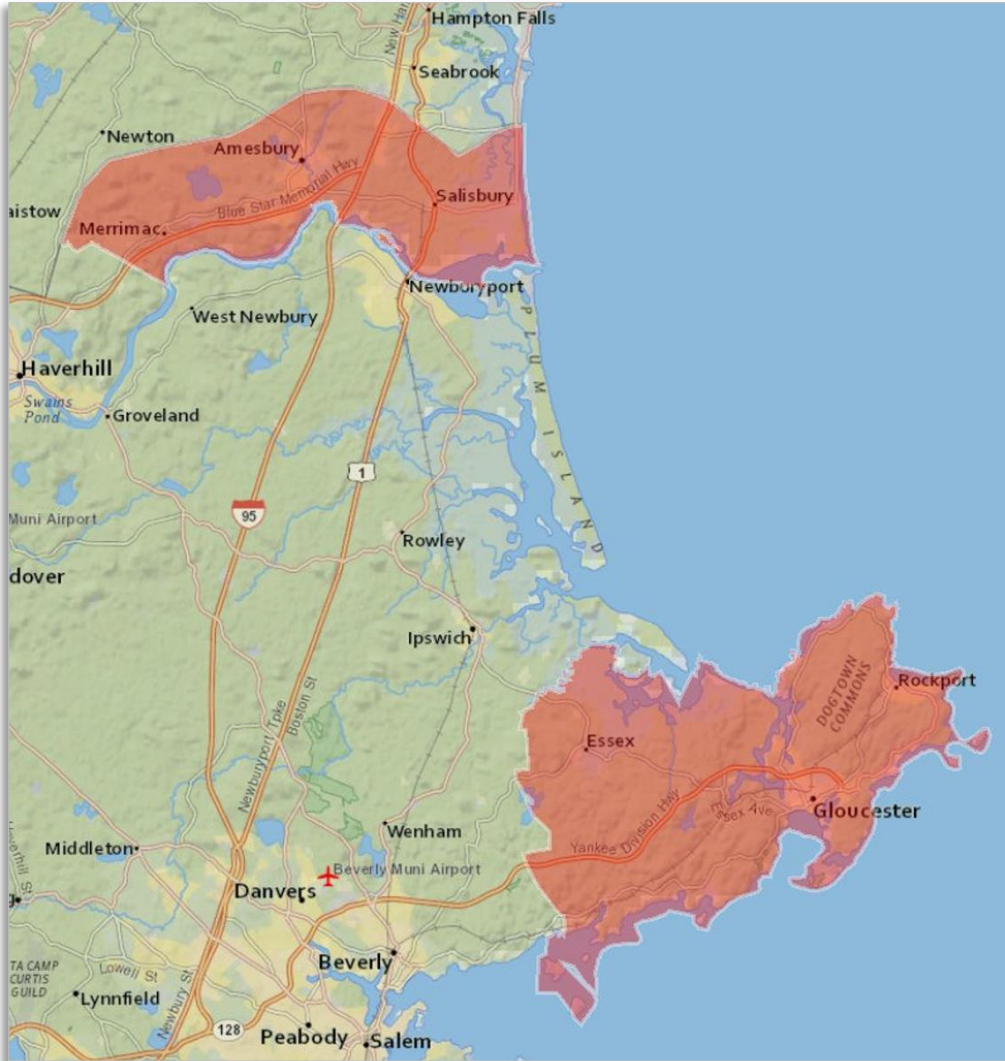
888-579-8088

www.nationalmediaspots.com

media@nationalmediaspots.com



Amesbury-Gloucester Zone

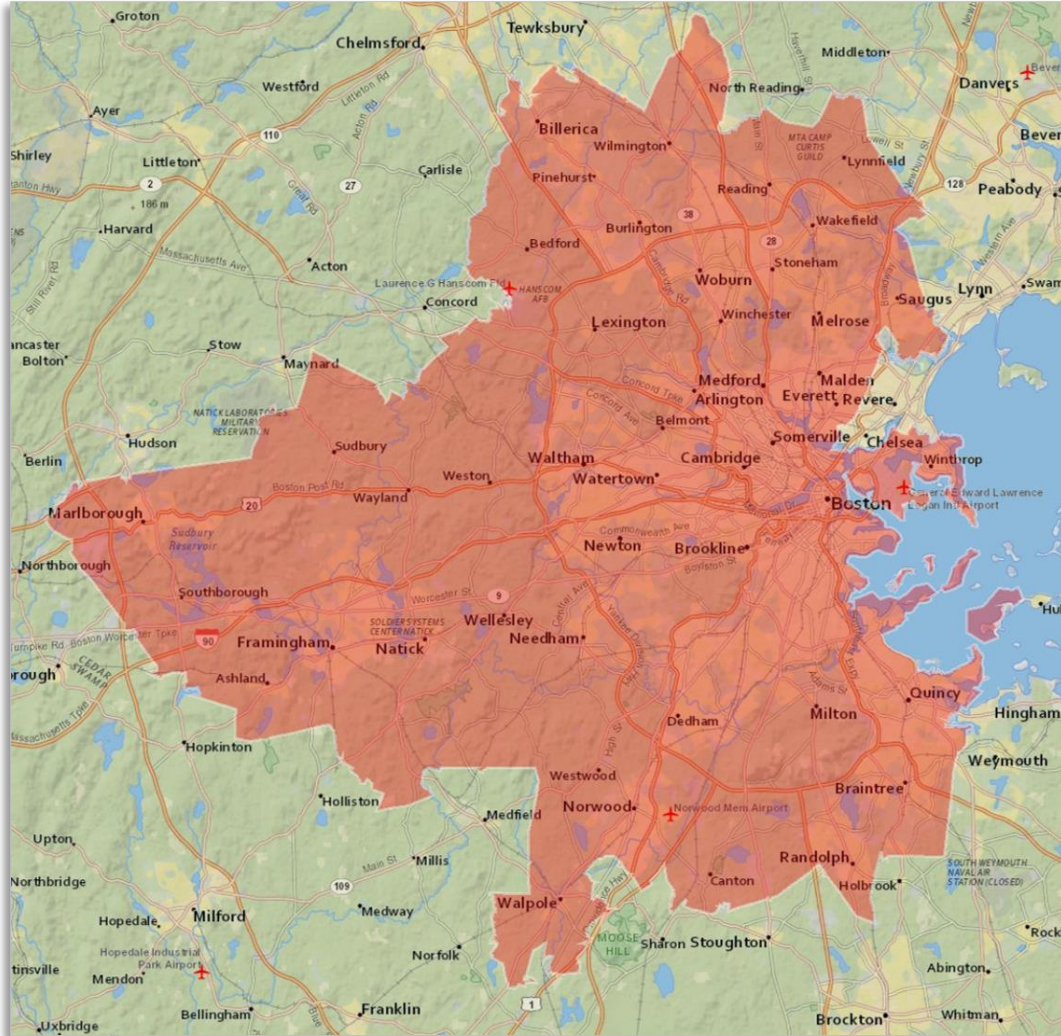


Communities / Towns Served

| | |
|------------|----|
| Amesbury | MA |
| Essex | MA |
| Gloucester | MA |
| Manchester | MA |
| Merrimac | MA |
| Rockport | MA |
| Salisbury | MA |



Beltway Zone



Communities / Towns Served

- | | | |
|-------------------|--------------------|------------------|
| Allston | Jamaica Plain | Roxbury |
| Arlington | Lexington | Roxbury Crossing |
| Ashland | Lincoln | Saugus |
| Auburndale | Lynnfield | Sherborn |
| Bedford | Malden | Somerville |
| Belmont | Marlborough | Southborough |
| Billerica | Mattapan | Stoneham |
| Boston | Medford | Sudbury |
| Braintree | Melrose | Waban |
| Brighton | Milton | Wakefield |
| Brookline | Natick | Walpole |
| Burlington | Needham | Waltham |
| Cambridge | Needham Heights | Watertown |
| Canton | Newton | Wayland |
| Charlestown | Newton Center | Wellesley |
| Chestnut Hill | Newton Highlands | Wellesley Hills |
| Dedham | Newton Lower Falls | West Newton |
| Dorchester | Newton Upper Falls | West Roxbury |
| Dorchester Center | Newtonville | Weston |
| Dover | Norwood | Westwood |
| Everett | Quincy | Wilmington |
| Framingham | Randolph | Winchester |
| Hanscom AFB | Reading | Winthrop |
| Hyde Park | Roslindale | Woburn |



Beverly Zone



Communities / Towns Served

Towns:

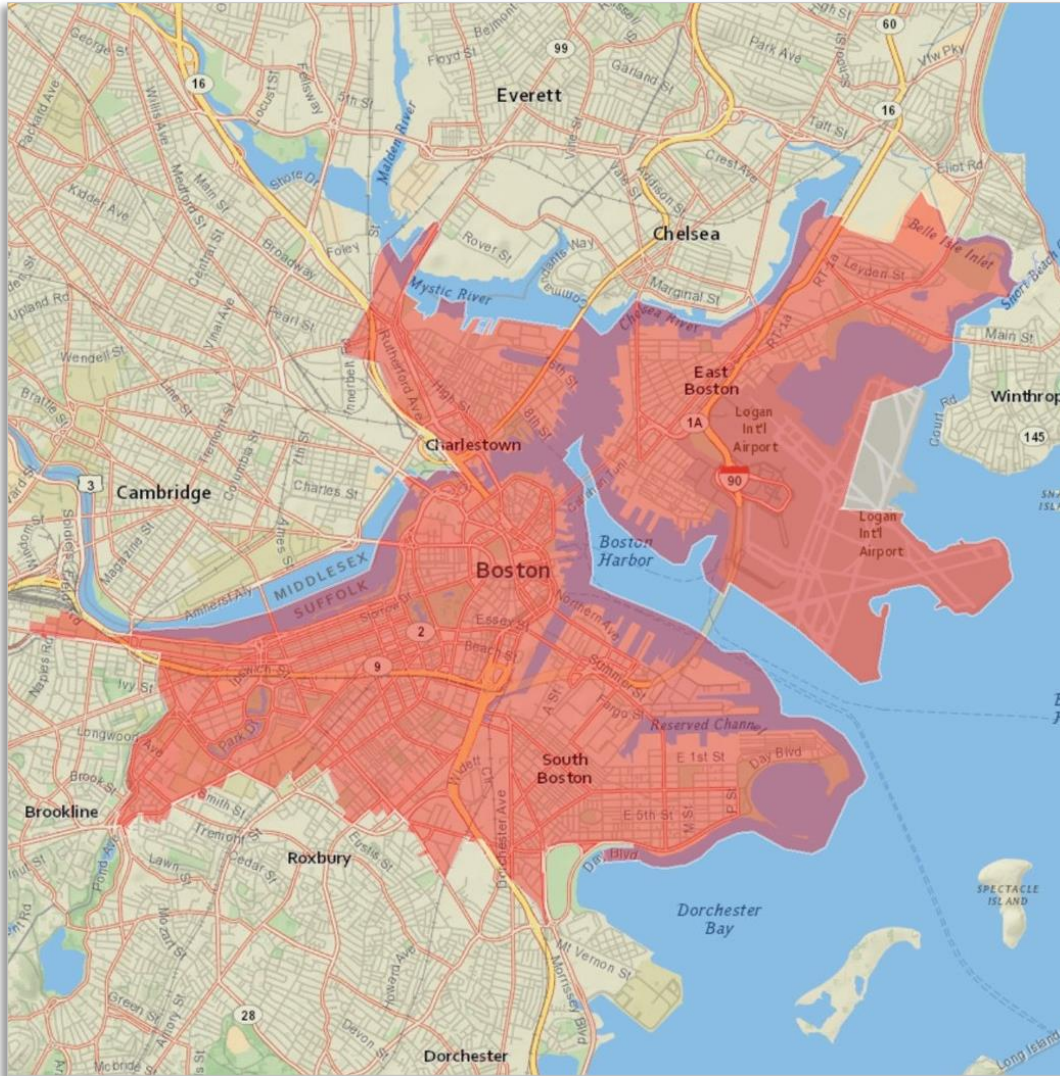
- Beverly MA
- Boxford MA
- Danvers MA
- Hamilton MA
- Hathorne MA
- Marblehead MA
- Middleton MA
- Prides Crossing MA
- South Hamilton MA
- Topsfield MA
- Wenham MA
- West Boxford MA

Expanded Towns:

- Essex MA
- Georgetown MA
- Ipswich MA
- Rowley MA
- West Newbury MA



Boston Coastal Zone



Communities / Towns Served

| | |
|----------------|-----------|
| Boston | MA |
| Back Bay | MA |
| Beacon Hill | MA |
| Charlestown | MA |
| Chinatown | MA |
| East Boston | MA |
| Fenway | MA |
| Government Ctr | MA |
| Kenmore | MA |
| North End | MA |
| Prudential Ctr | MA |
| Seaport | MA |
| South Boston | MA |
| South End | MA |
| West End | MA |



Boston Metro Zone

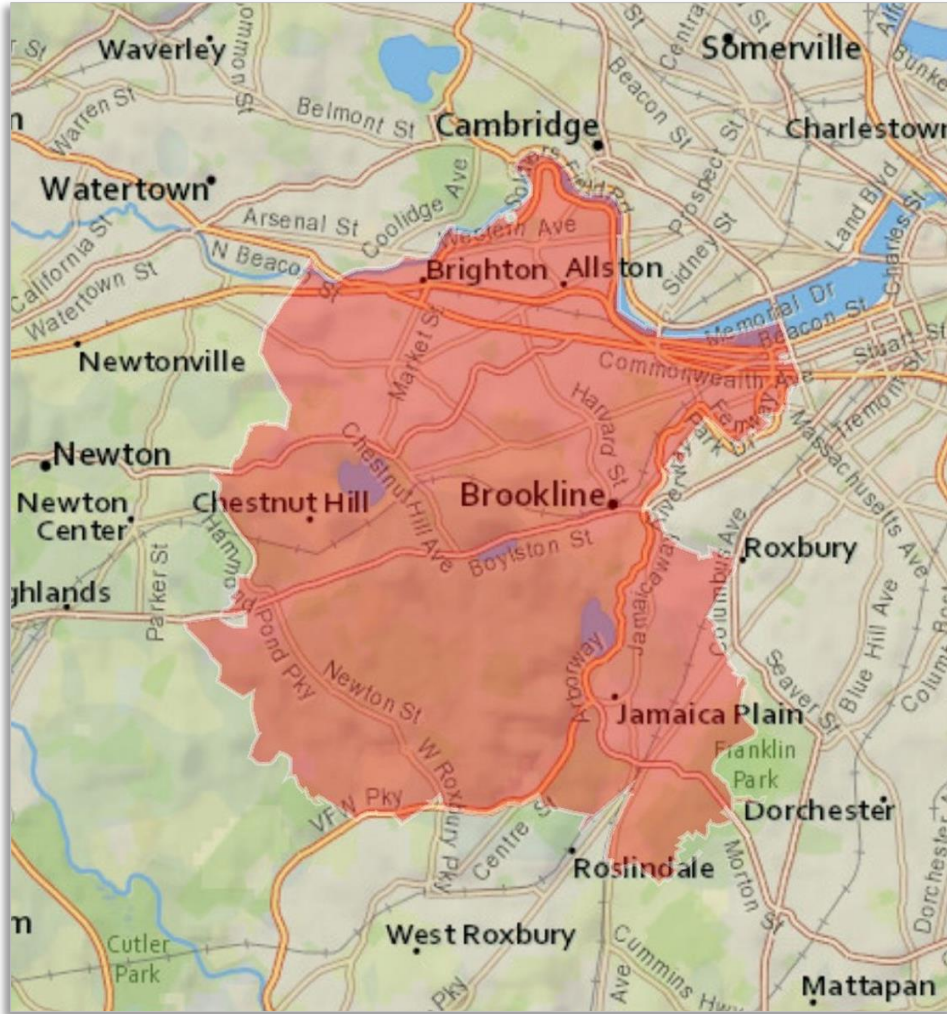


Communities / Towns Served

| | | | |
|---------------|--------------|--------------------|------------------------|
| Abington | Fayville | Melrose | Shrewsbury |
| Acton | Fitchburg | Mendon | Somerville |
| Andover | Foxboro | Methuen | South Grafton |
| Arlington | Framingham | Middleboro | South Hamilton |
| Ashland | Franklin | Middleton | South Lancaster |
| Assonet | Georgetown | Milford | South Walpole |
| Auburndale | Grafton | Millbury | Southborough |
| Ayer | Groton | Millis | Sterling |
| Babson Park | Halifax | Milton | Stoneham |
| Bedford | Hanover | Nahant | Stoughton |
| Bellingham | Hanscom AFB | Natick | Stow |
| Belmont | Hingham | Needham | Sudbury |
| Beverly | Holbrook | Needham Heights | Sutton |
| Billerica | Holliston | Newton | Swampscott |
| Blackstone | Hopedale | Newton Center | Tewksbury |
| Bolton | Hopkinton | Newton Highlands | Topsfield |
| Boxborough | Hudson | Newton Lower Falls | Tyngsboro |
| Boxford | Hull | Newton Upper Falls | Village of Nagog Woods |
| Braintree | Humarock | Newtonville | Waban |
| Burlington | Ipswich | Norfolk | Wakefield |
| Canton | Kingston | North Andover | Walpole |
| Carlisle | Lakeville | North Billerica | Waltham |
| Carver | Lancaster | North Chelmsford | Wareham |
| Chelmsford | Lawrence | North Grafton | Watertown |
| Chelsea | Leominster | North Reading | Wayland |
| Chestnut Hill | Lexington | Northborough | Wellesley |
| Clinton | Lincoln | Norwell | Wellesley Hills |
| Cohasset | Littleton | Norwood | Wenham |
| Concord | Lowell | Peabody | West Boxford |
| Danvers | Lynn | Pembroke | West Newbury |
| Dedham | Lynnfield | Plainville | West Newton |
| Devens | Malden | Plymouth | West Wareham |
| Dover | Marblehead | Plympton | Westborough |
| Dracut | Marion | Randolph | Westford |
| Dunstable | Marlborough | Reading | Weston |
| Duxbury | Marshfield | Rochester | Westwood |
| East Freetown | Mattapoisett | Rockland | Wilmington |
| East Walpole | Maynard | Rowley | Winchester |
| East Wareham | Medfield | Saugus | Winthrop |
| Essex | Medford | Sharon | Woburn |
| Everett | Medway | Sherborn | Wrentham |



Boston North Zone

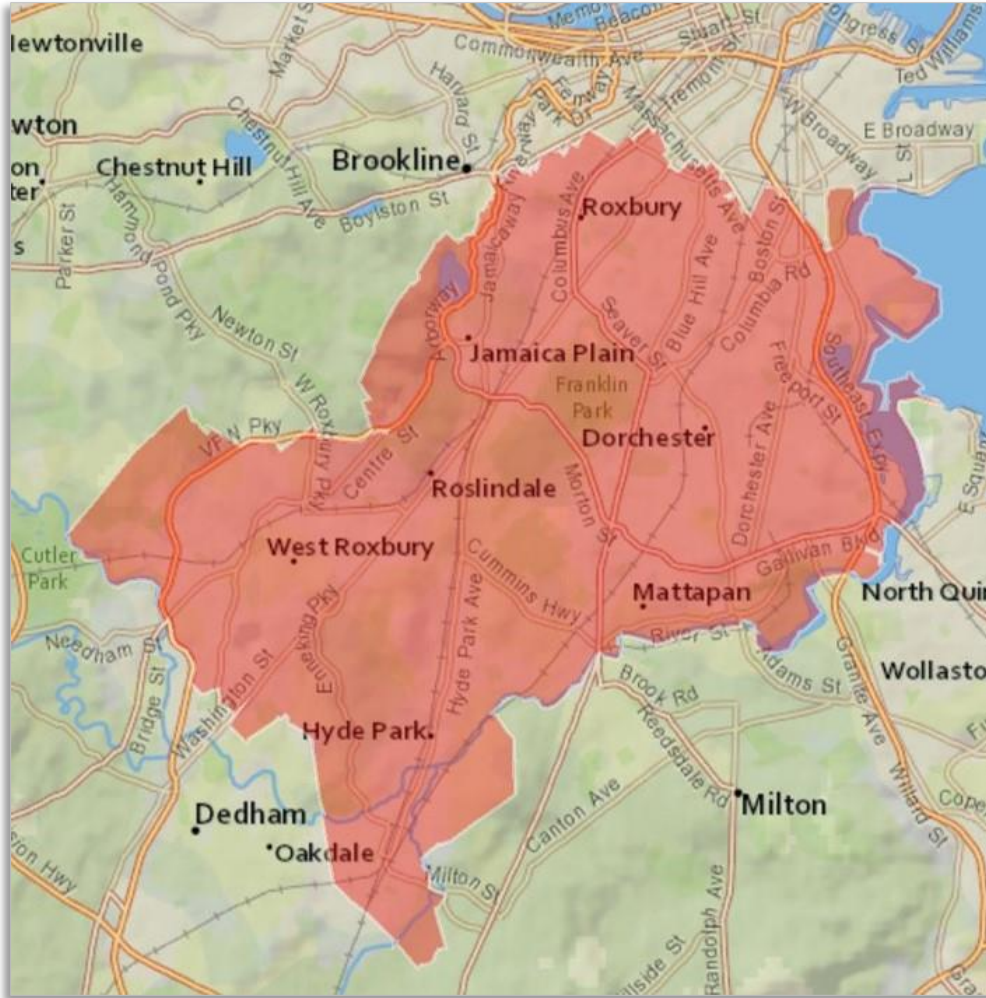


Communities / Towns Served

| | |
|----------------------|-----------|
| Boston | MA |
| Allston | MA |
| Brighton | MA |
| Brookline | MA |
| Chestnut Hill | MA |



Boston South Zone

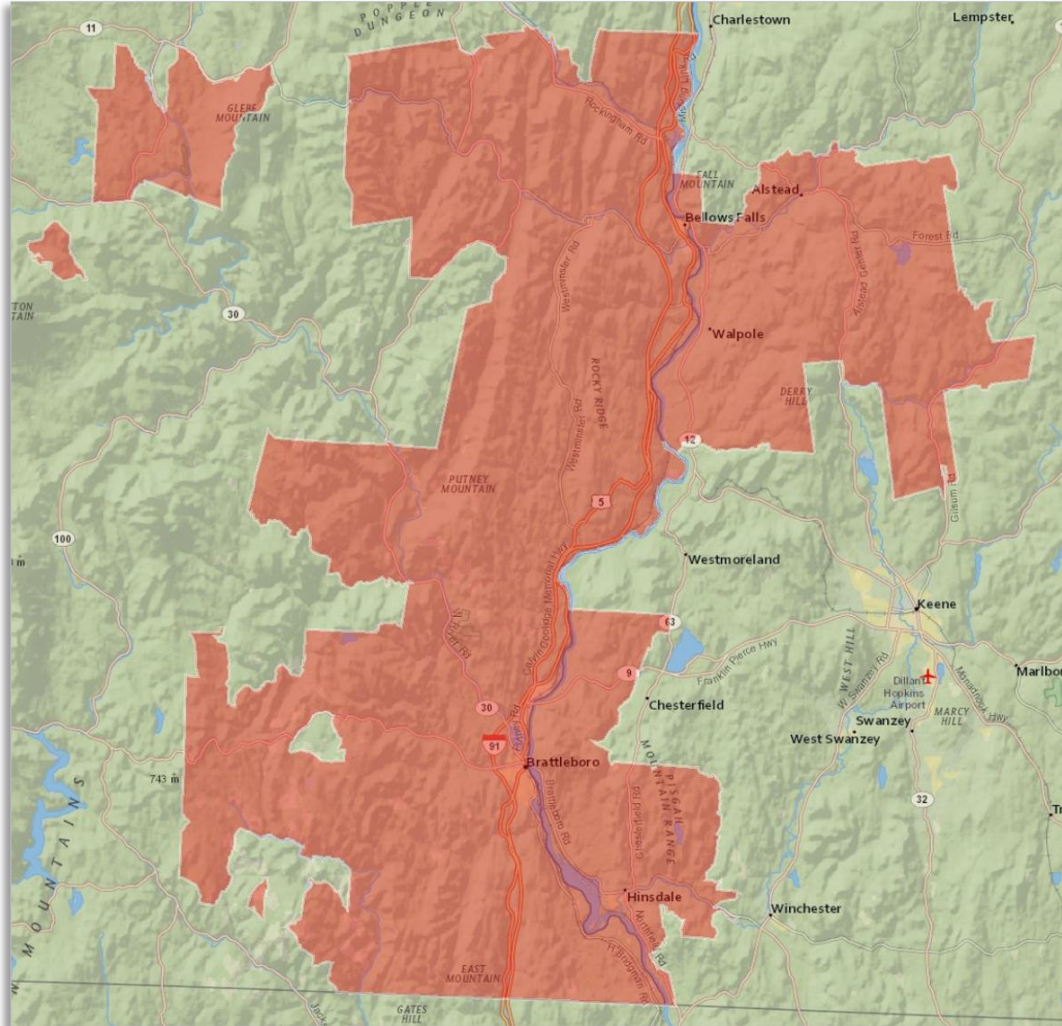


Communities / Towns Served

| | |
|-------------------|-----------|
| Boston | MA |
| Dorchester | MA |
| Dorchester Center | MA |
| Hyde Park | MA |
| Jamaica Plain | MA |
| Mattapan | MA |
| Roslindale | MA |
| Roxbury | MA |
| Roxbury Crossing | MA |
| West Roxbury | MA |



Brattleboro Zone

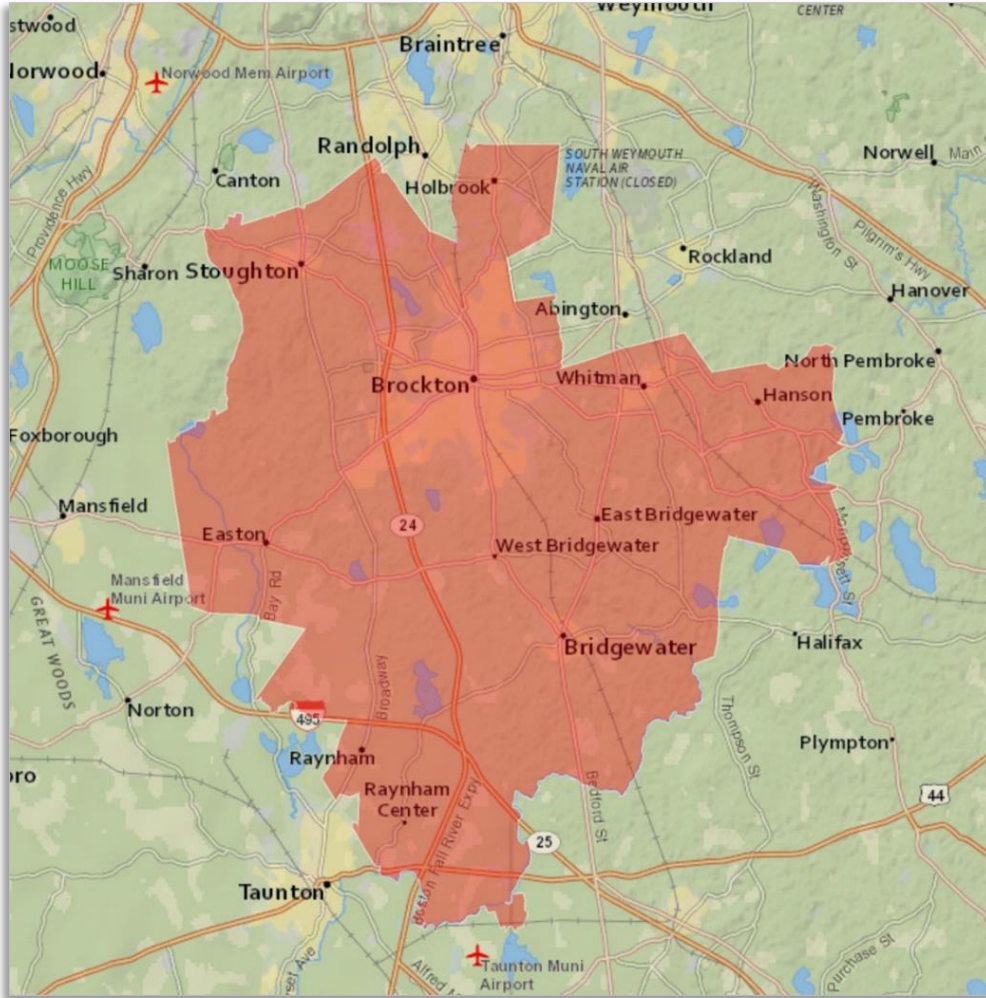


Communities / Towns Served

| | |
|-------------------|----|
| Alstead | NH |
| Ashuelot | NH |
| Bellows Falls | VT |
| Brattleboro | VT |
| Brookline | VT |
| Cambridgeport | VT |
| Gilsum | NH |
| Grafton | VT |
| Hinsdale | NH |
| Newfane | VT |
| North Walpole | NH |
| Putney | VT |
| Saxtons River | VT |
| South Londonderry | VT |
| Vernon | VT |
| Walpole | NH |
| West Chesterfield | NH |
| Westminster | VT |



Brockton Zone

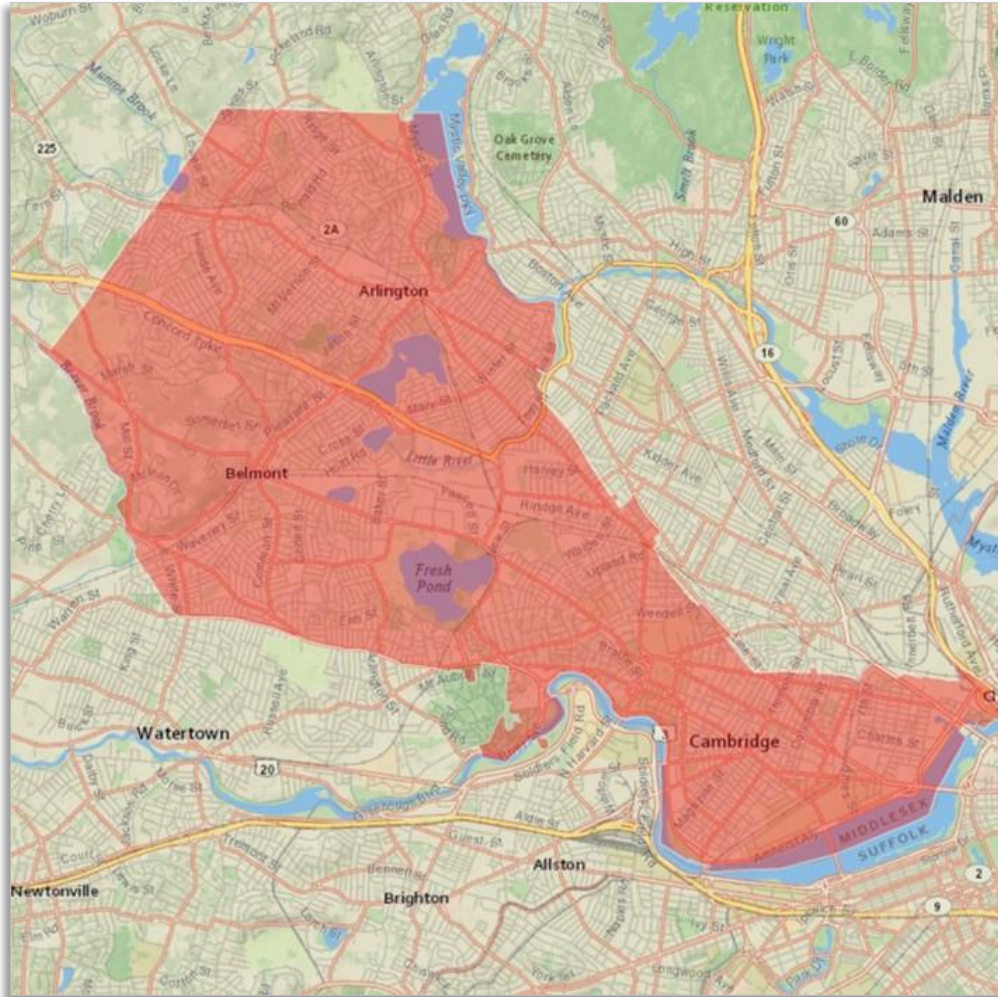


Communities / Towns Served

| | |
|------------------|----|
| Avon | MA |
| Bridgewater | MA |
| Brockton | MA |
| East Bridgewater | MA |
| Easton | MA |
| Elmwood | MA |
| Hanson | MA |
| Holbrook | MA |
| Monponsett | MA |
| North Easton | MA |
| Raynham | MA |
| South Easton | MA |
| Stoughton | MA |
| West Bridgewater | MA |
| Whitman | MA |



Cambridge Zone



Communities / Towns Served

| | |
|-----------|----|
| Arlington | MA |
| Belmont | MA |
| Cambridge | MA |



Cape Cod Zone

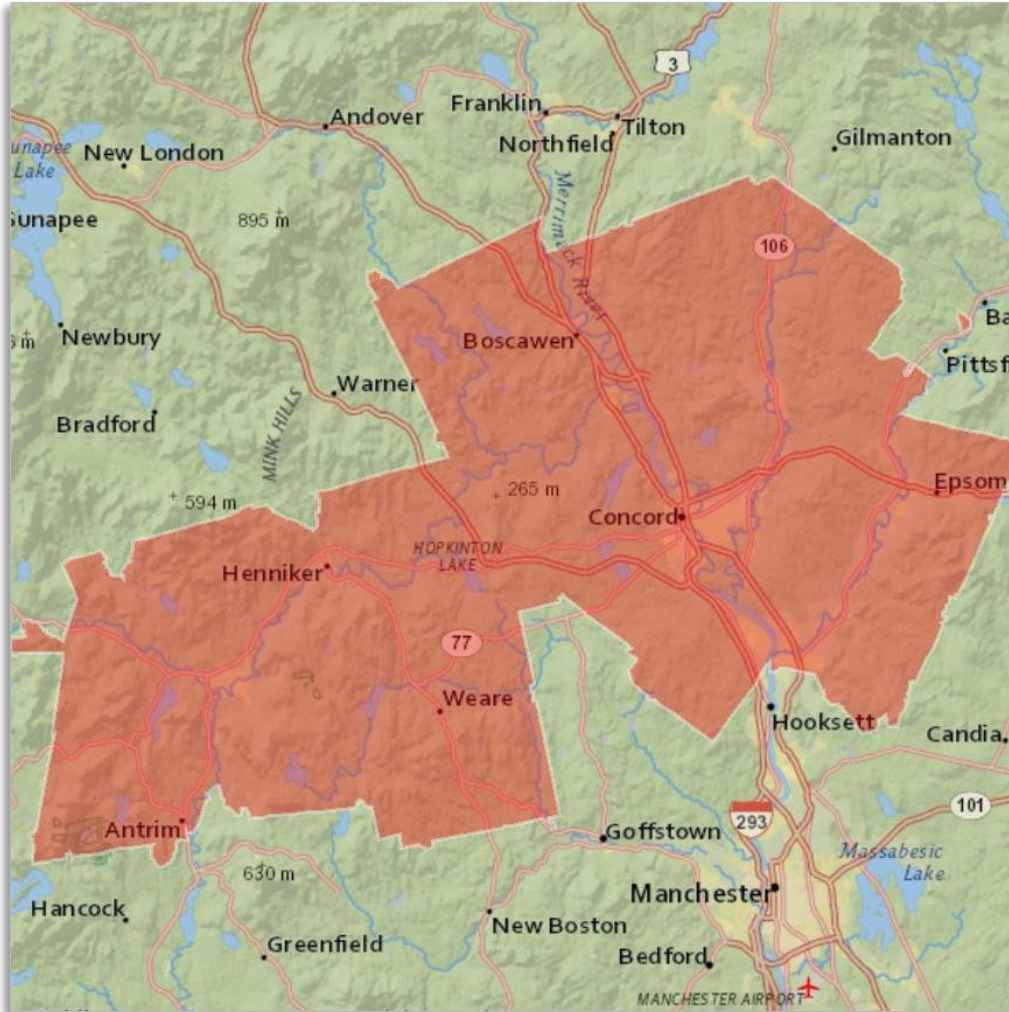


Communities / Towns Served

| | | | |
|----------------|----|------------------|----|
| Barnstable | MA | North Truro | MA |
| Brewster | MA | Orleans | MA |
| Centerville | MA | Osterville | MA |
| Chatham | MA | Provincetown | MA |
| Cotuit | MA | Siasconset | MA |
| Cummaquid | MA | South Chatham | MA |
| Dennis | MA | South Dennis | MA |
| Dennis Port | MA | South Harwich | MA |
| East Dennis | MA | South Orleans | MA |
| East Orleans | MA | South Wellfleet | MA |
| Eastham | MA | South Yarmouth | MA |
| Harwich | MA | Truro | MA |
| Harwich Port | MA | Wellfleet | MA |
| Hyannis | MA | West Barnstable | MA |
| Hyannis Port | MA | West Chatham | MA |
| Marstons Mills | MA | West Dennis | MA |
| Mashpee | MA | West Harwich | MA |
| Nantucket | MA | West Hyannisport | MA |
| North Chatham | MA | West Yarmouth | MA |
| North Eastham | MA | Yarmouth Port | MA |



Concord Zone

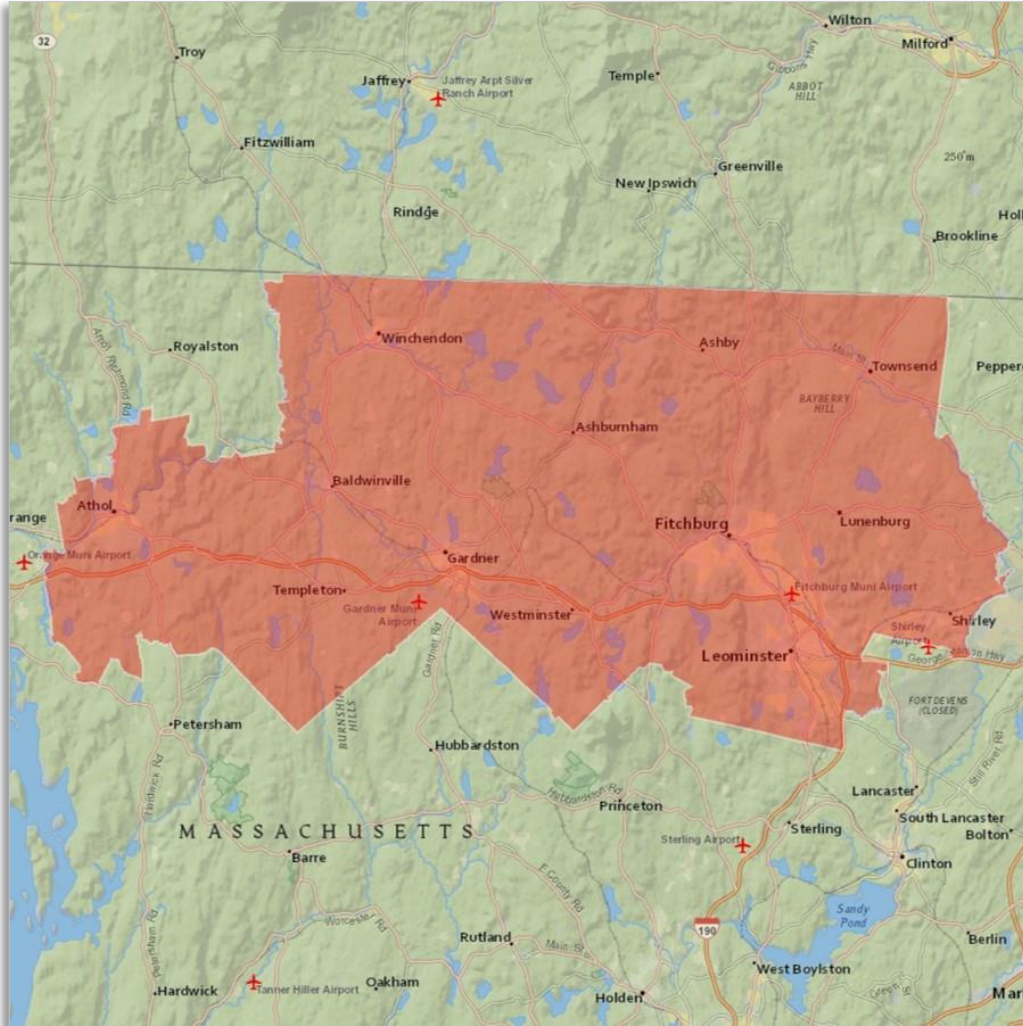


Communities / Towns Served

| | |
|--------------|----|
| Allenstown | NH |
| Antrim | NH |
| Boscawen | NH |
| Bow | NH |
| Canterbury | NH |
| Chichester | NH |
| Concord | NH |
| Contoocook | NH |
| Epsom | NH |
| Henniker | NH |
| Hillsborough | NH |
| Loudon | NH |
| Pembroke | NH |
| Suncook | NH |
| Weare | NH |



Fitchburg Zone

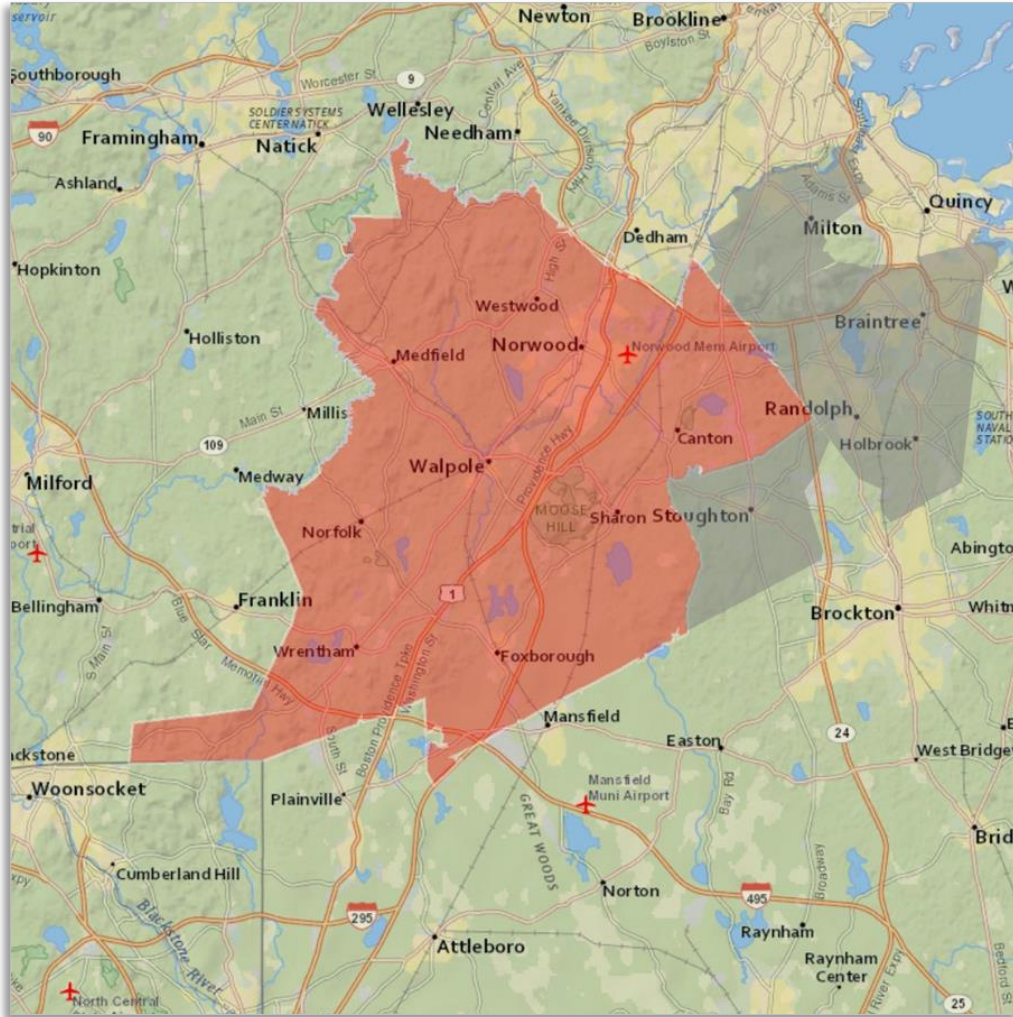


Communities / Towns Served

| | |
|--------------------|----|
| Ashburnham | MA |
| Ashby | MA |
| Athol | MA |
| Baldwinville | MA |
| East Templeton | MA |
| Fitchburg | MA |
| Gardner | MA |
| Leominster | MA |
| Lunenburg | MA |
| Shirley | MA |
| Templeton | MA |
| Townsend | MA |
| West Townsend | MA |
| Westminister | MA |
| Winchendon | MA |
| Winchendon Springs | MA |



Foxboro Zone



Communities / Towns Served

Towns:

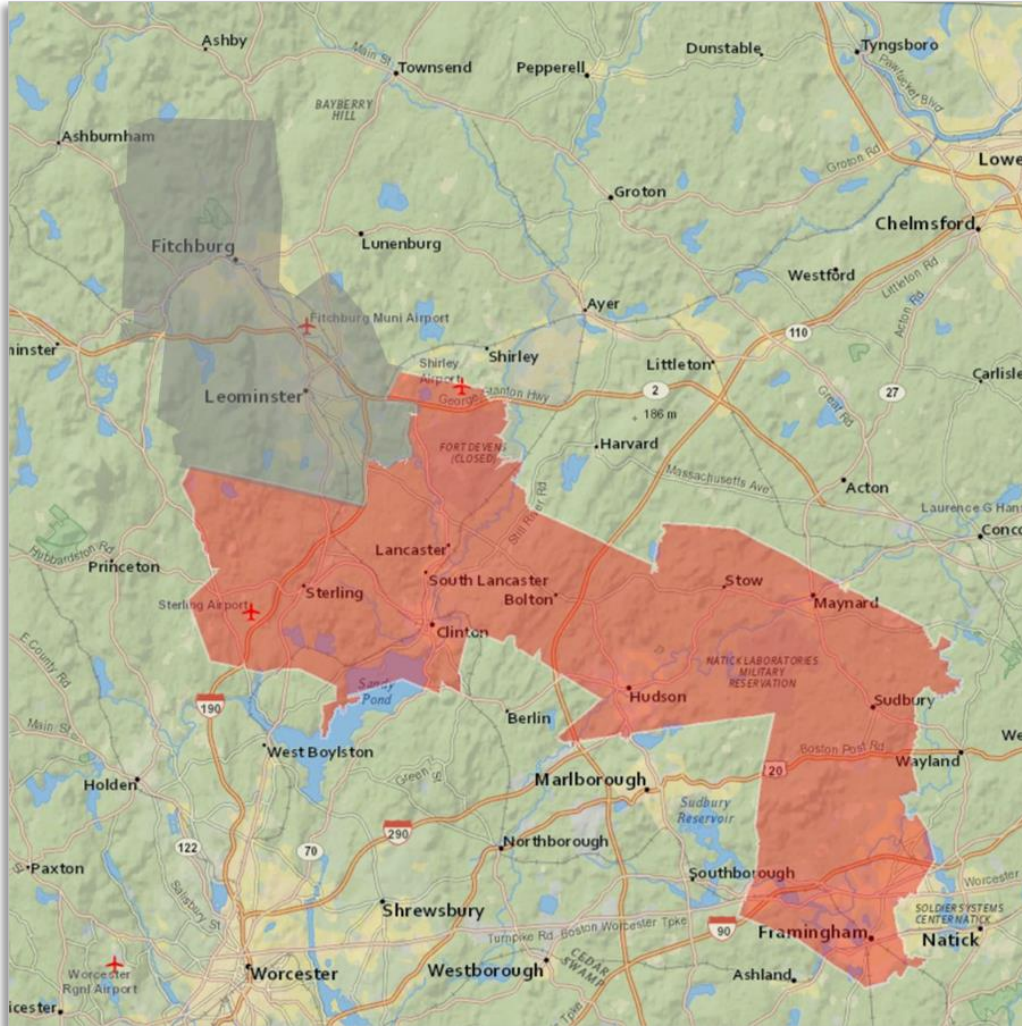
- Canton MA
- Dover MA
- East Walpole MA
- Foxboro MA
- Medfield MA
- Norfolk MA
- Norwood MA
- Sharon MA
- Sheldonville MA
- South Walpole MA
- Walpole MA
- Westwood MA
- Wrentham MA

Expanded Towns:

- Braintree, MA
- Holbrook, MA
- Milton, MA
- Randolph, MA
- Stoughton, MA



Framingham Zone



Communities / Towns Served

Towns:

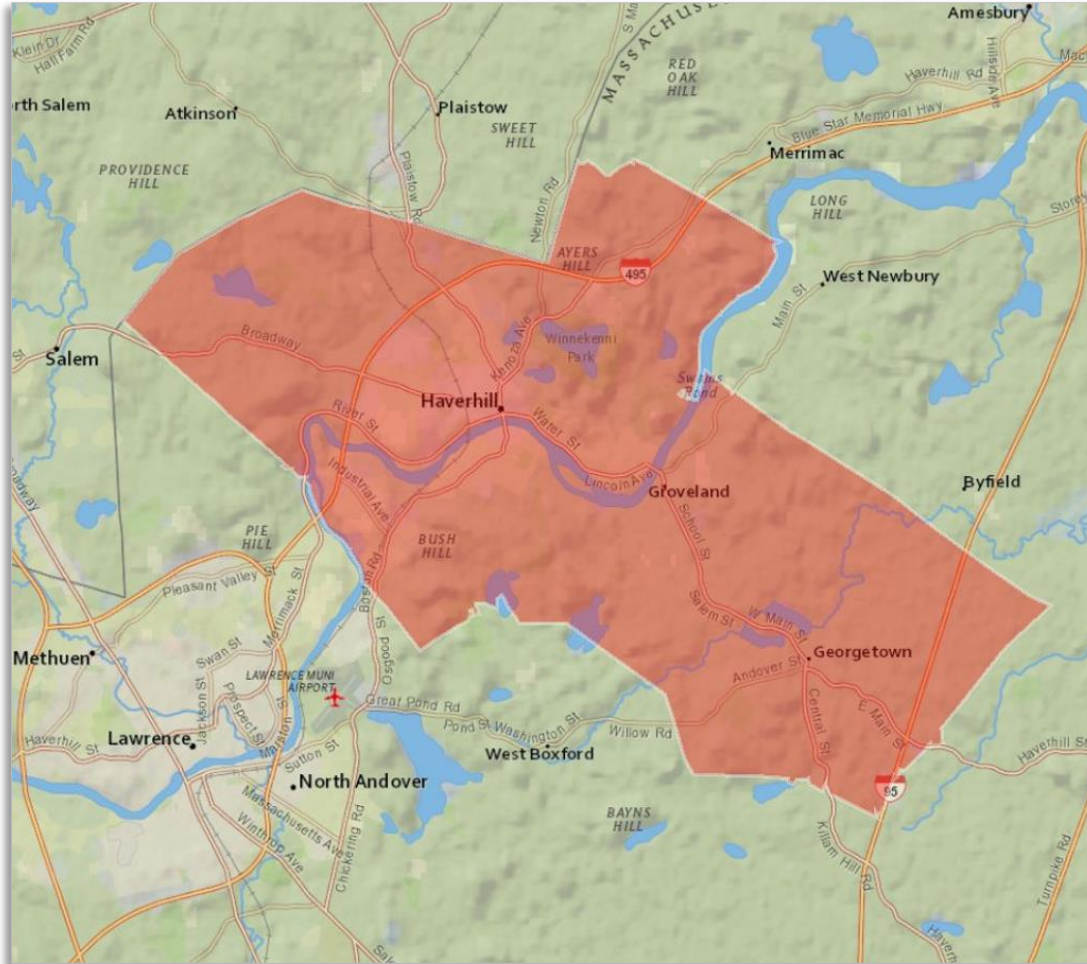
- Bolton MA
- Clinton MA
- Framingham MA
- Hudson MA
- Lancaster MA
- Maynard MA
- South Lancaster MA
- Sterling MA
- Stow MA
- Sudbury MA

Expanded Towns:

- Fitchburg MA
- Leominster MA



Haverhill Zone

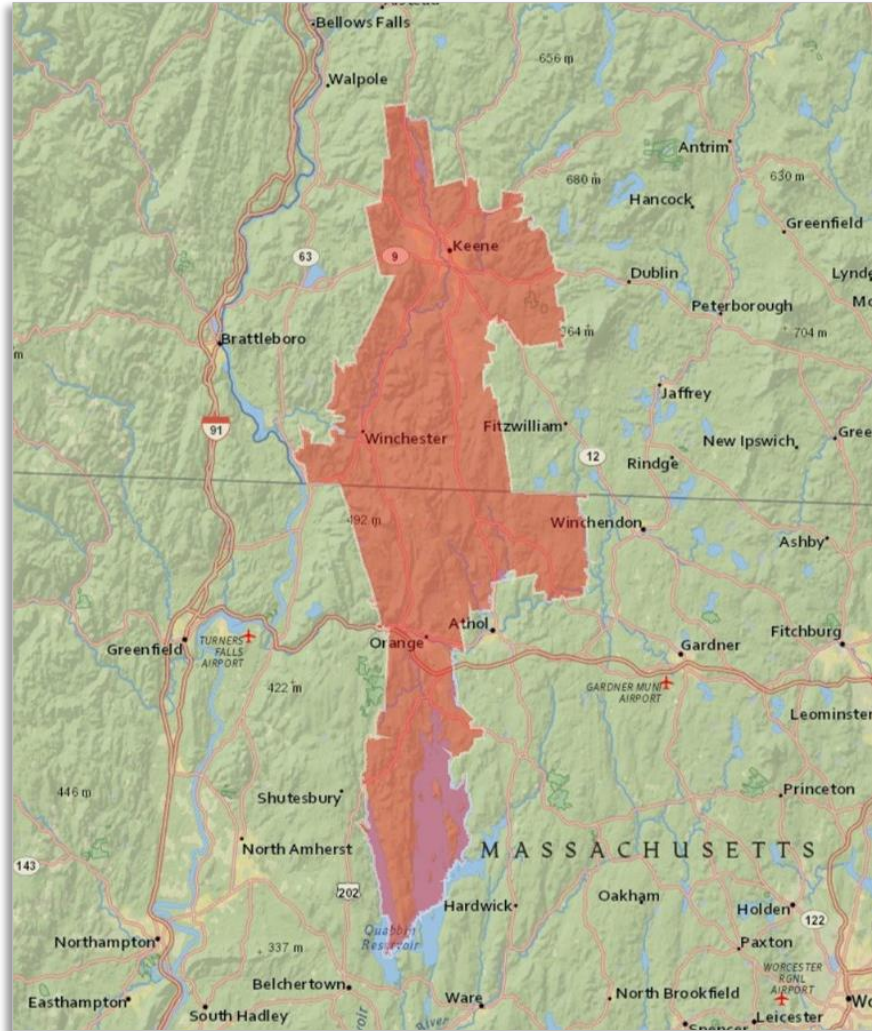


Communities / Towns Served

| | |
|------------|----|
| Georgetown | MA |
| Groveland | MA |
| Haverhill | MA |



Keene Zone

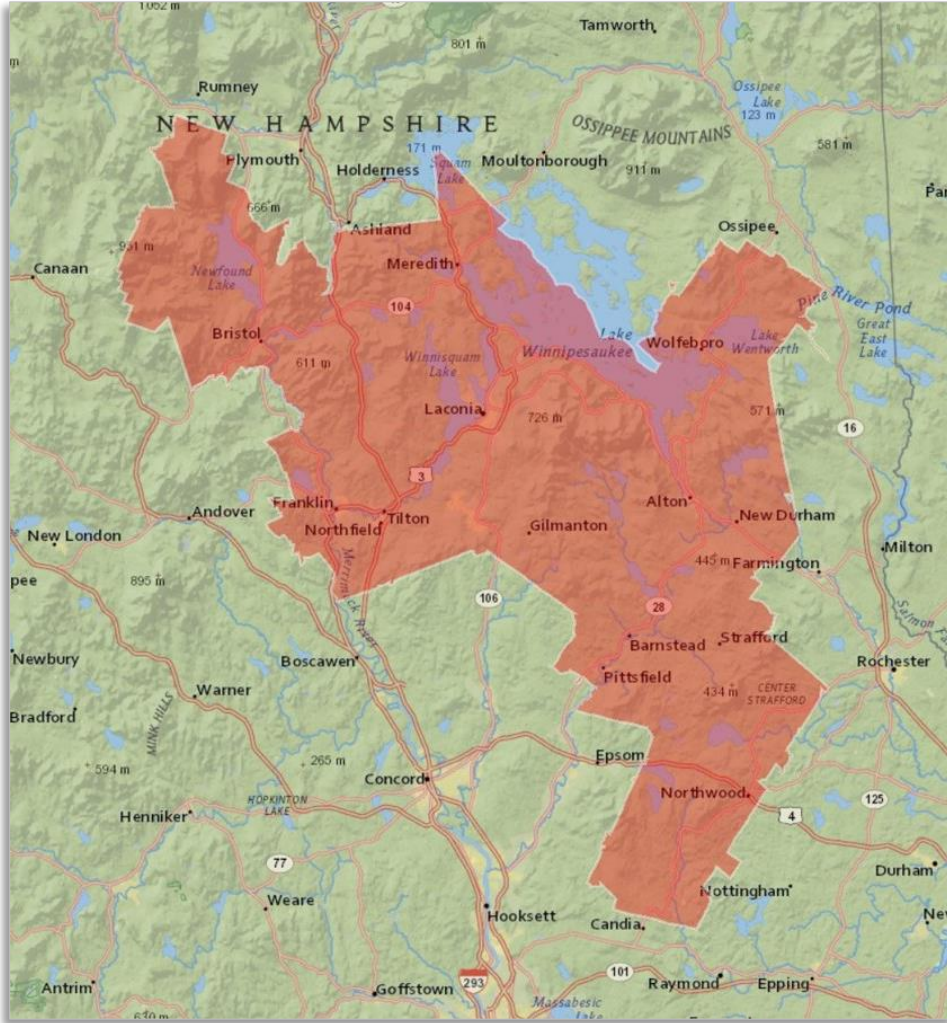


Communities / Towns Served

| | |
|--------------|----|
| Keene | NH |
| Marlborough | NH |
| New Salem | MA |
| Orange | MA |
| Richmond | NH |
| Royalston | MA |
| Surry | NH |
| Swansey | NH |
| Warwick | MA |
| West Swansey | NH |
| Winchester | NH |



Laconia Zone

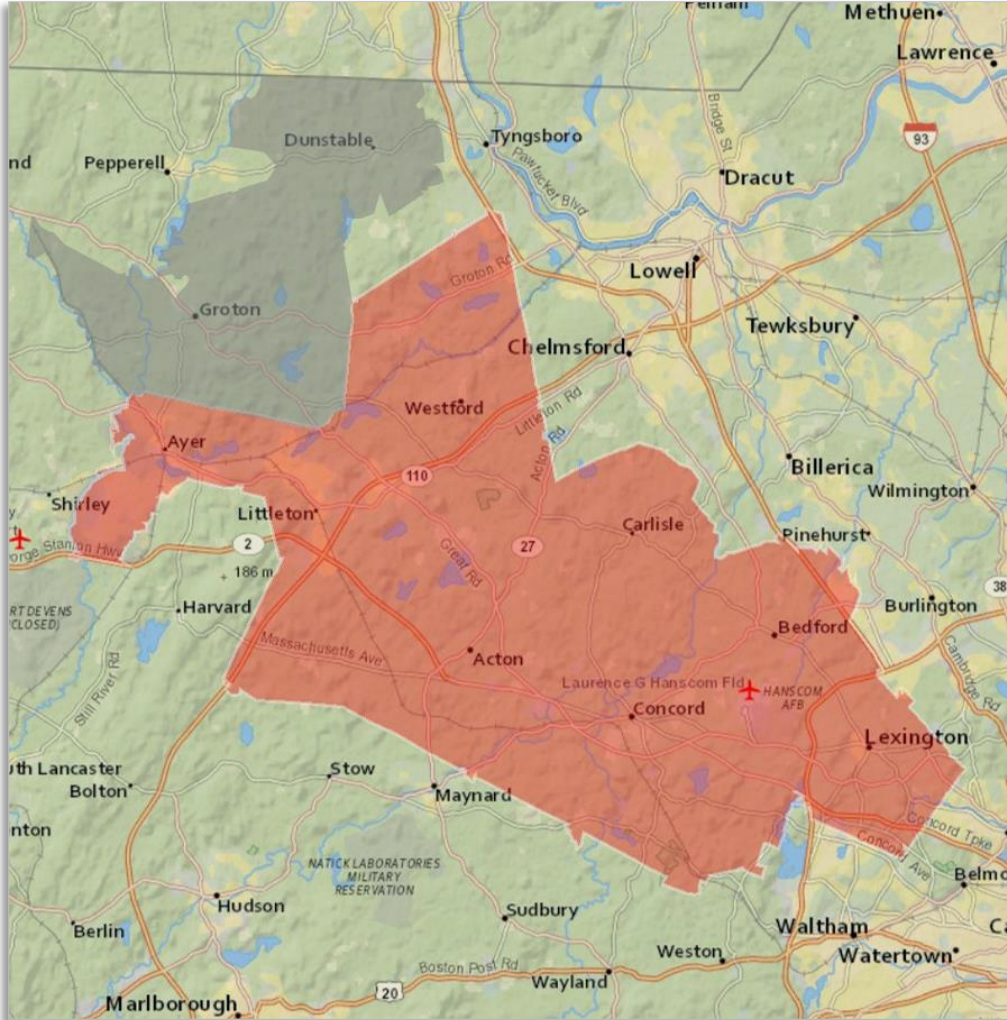


Communities / Towns Served

| | | | |
|----------------------|----|-----------------|----|
| Alexandria | NH | Laconia | NH |
| Alton | NH | Lochmere | NH |
| Alton Bay | NH | Meredith | NH |
| Barnstead | NH | New Durham | NH |
| Belmont | NH | New Hampton | NH |
| Bristol | NH | Northfield | NH |
| Center Barnstead | NH | Northwood | NH |
| Center Harbor | NH | Pittsfield | NH |
| Deerfield | NH | Sanbornton | NH |
| Franklin | NH | Strafford | NH |
| Gilford | NH | Tilton | NH |
| Gilmanton | NH | Winnisquam | NH |
| Gilmanton Iron Works | NH | Wolfeboro | NH |
| Hebron | NH | Wolfeboro Falls | NH |



Lexington Zone



Communities / Towns Served

Towns:

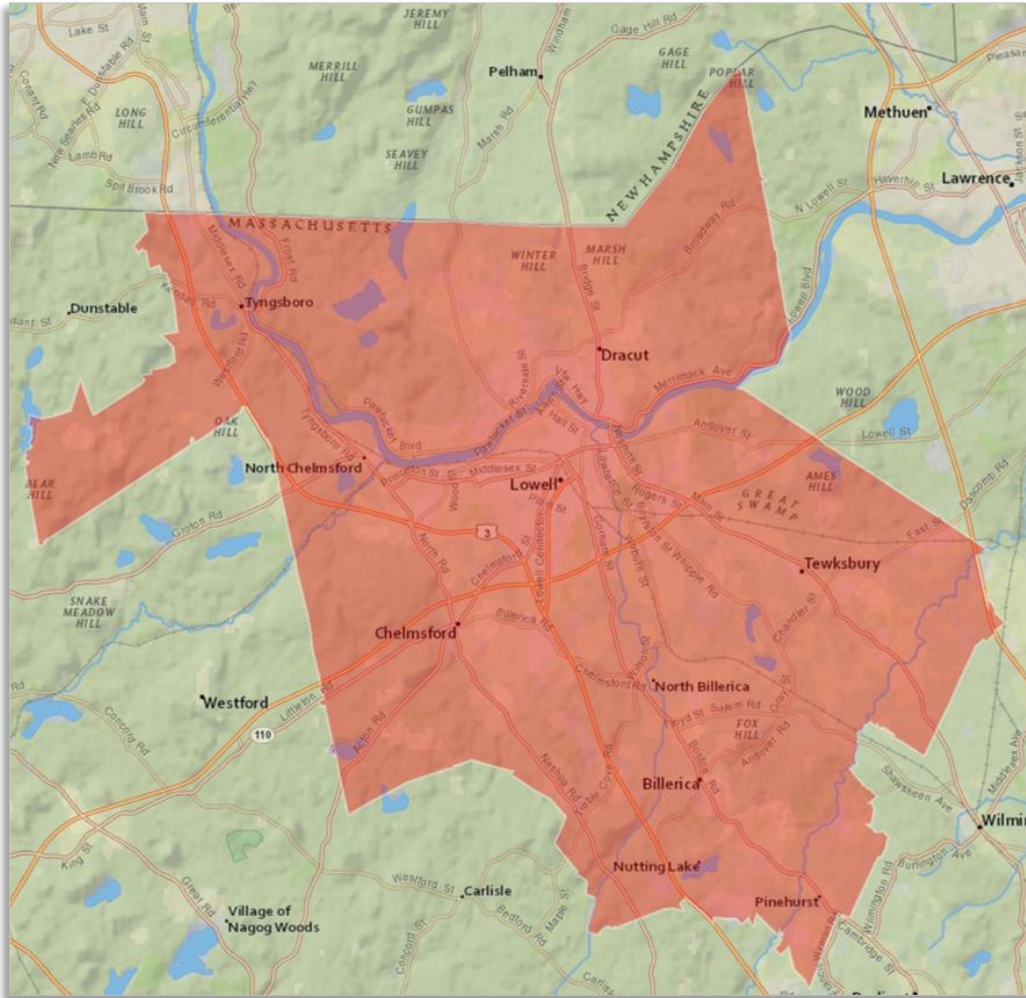
- Acton MA
- Ayer MA
- Bedford MA
- Boxborough MA
- Carlisle MA
- Concord MA
- Devens MA
- Hanscom AFB MA
- Lexington MA
- Lincoln MA
- Littleton MA
- Village Of Nagog Woods MA
- Westford MA

Expanded Towns:

- Dunstable MA
- Groton MA



Lowell Zone



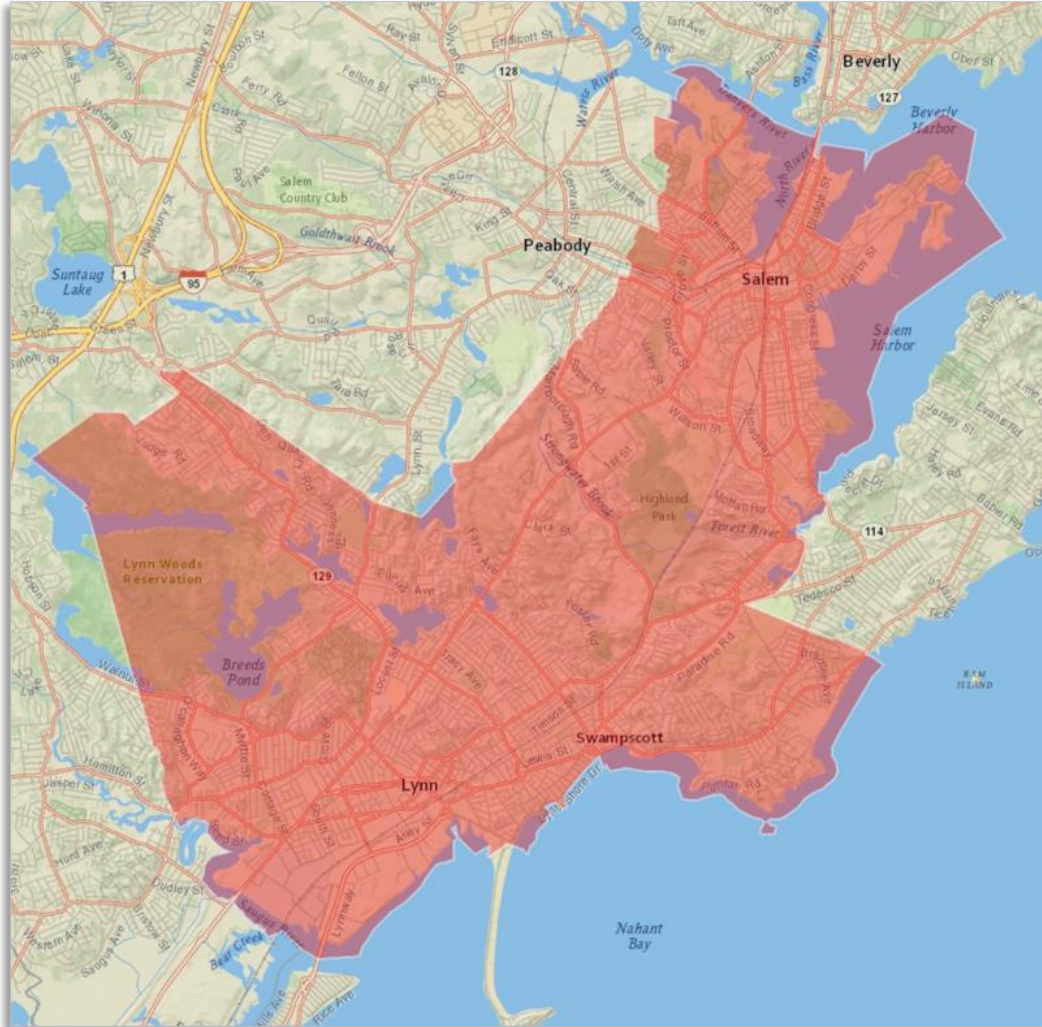
Communities / Towns Served



| | |
|------------------|----|
| Billerica | MA |
| Chelmsford | MA |
| Dracut | MA |
| Lowell | MA |
| North Billerica | MA |
| North Chelmsford | MA |
| Tewksbury | MA |
| Tyngsboro | MA |



Lynn Zone

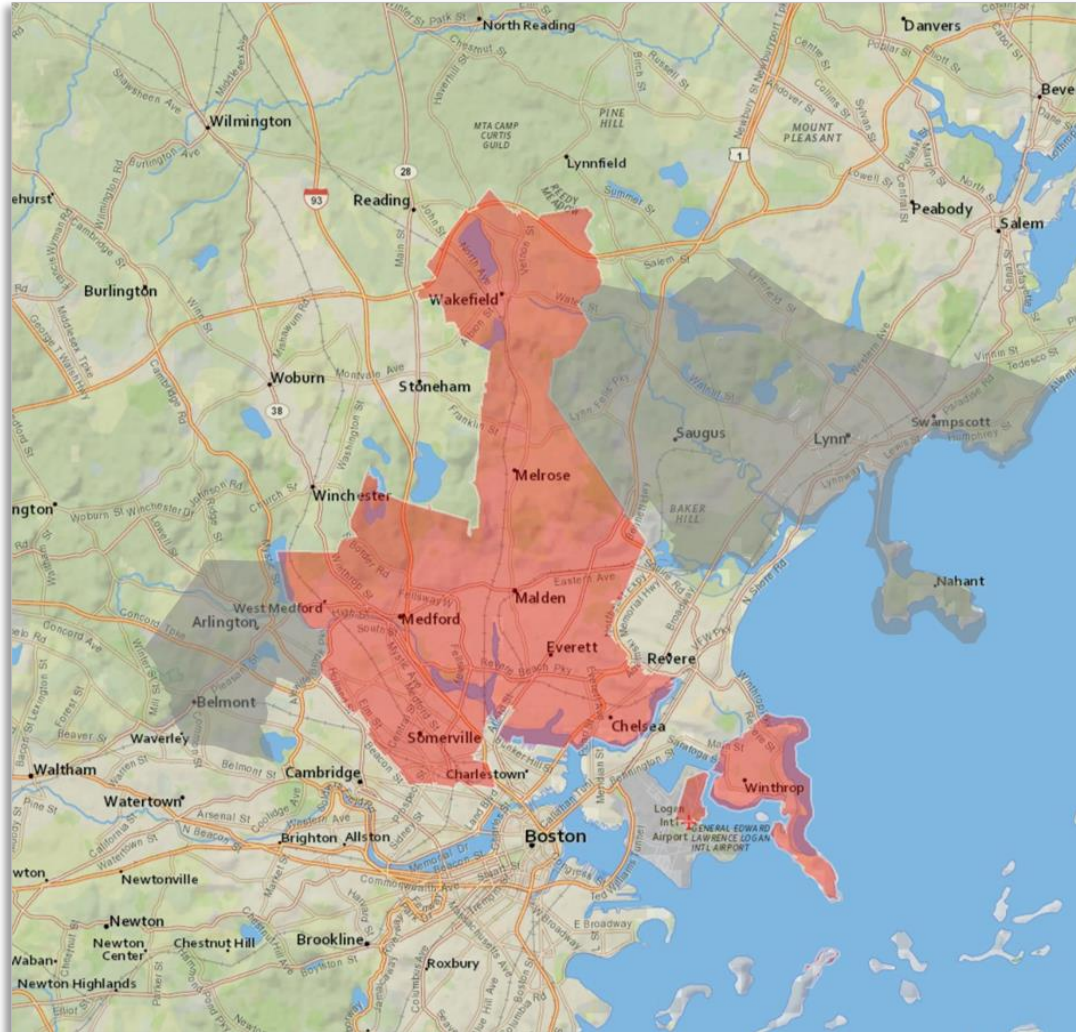


Communities / Towns Served

| | |
|------------|----|
| Lynn | MA |
| Salem | MA |
| Swampscott | MA |



Malden Zone



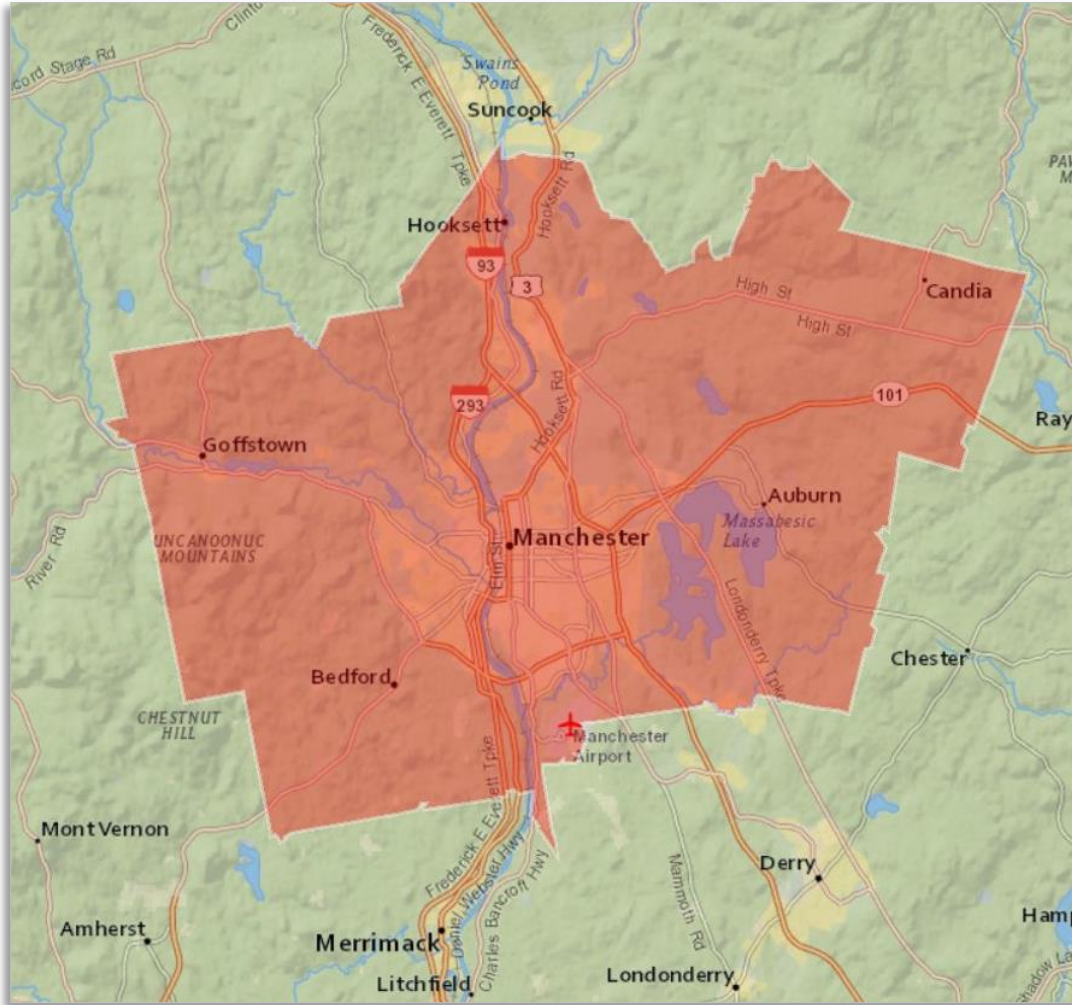
Communities / Towns Served

- **Towns:**
 - Chelsea MA
 - Everett MA
 - Malden MA
 - Medford MA
 - Melrose MA
 - Somerville MA
 - Wakefield MA
 - Winthrop MA

- **Expanded Towns:**
 - Arlington MA
 - Belmont MA
 - Lynn MA
 - Nahant MA
 - Saugus MA
 - Swampscott MA



Manchester Zone

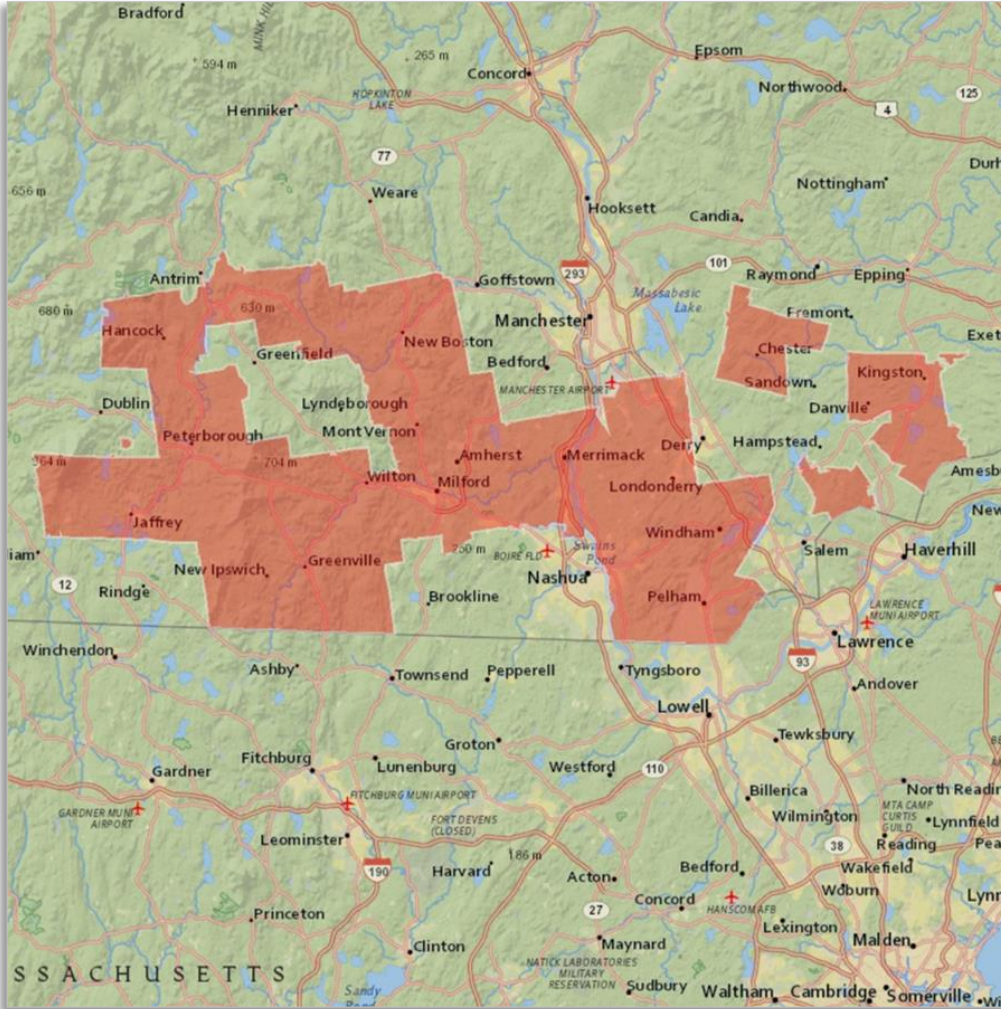


Communities / Towns Served

| | |
|-------------|----|
| Auburn | NH |
| Bedford | NH |
| Candia | NH |
| East Candia | NH |
| Goffstown | NH |
| Hooksett | NH |
| Manchester | NH |



Merrimack-Londonderry Zone

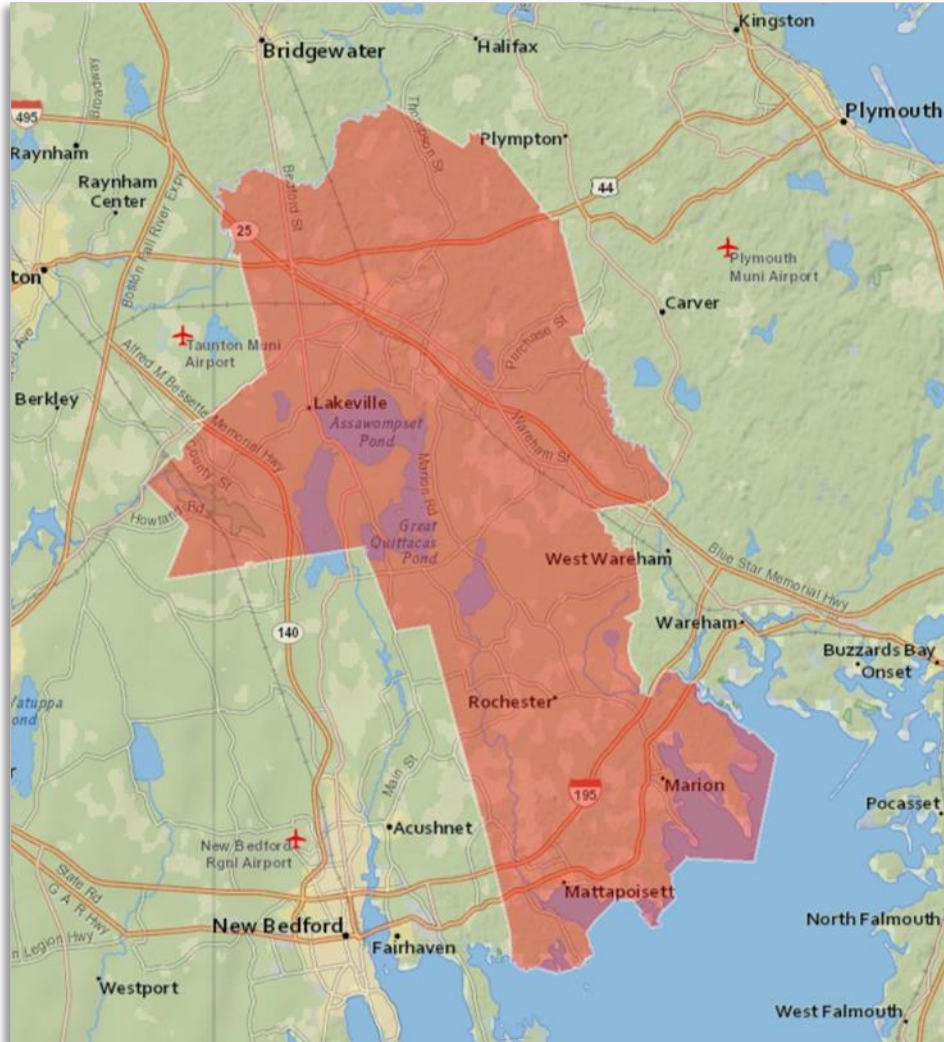


Communities / Towns Served

| | | | |
|-------------|----|-------------------|----|
| Amherst | NH | Merrimack | NH |
| Atkinson | NH | Milford | NH |
| Bennington | NH | Mont Vernon | NH |
| Chester | NH | New Boston | NH |
| Danville | NH | New Ipswich | NH |
| Francestown | NH | Newton | NH |
| Greenville | NH | Newton Junction | NH |
| Hancock | NH | Pelham | NH |
| Hudson | NH | Peterborough | NH |
| Jaffrey | NH | Temple | NH |
| Kingston | NH | West Peterborough | NH |
| Litchfield | NH | Wilton | NH |
| Londonderry | NH | Windham | NH |



Middleboro Zone

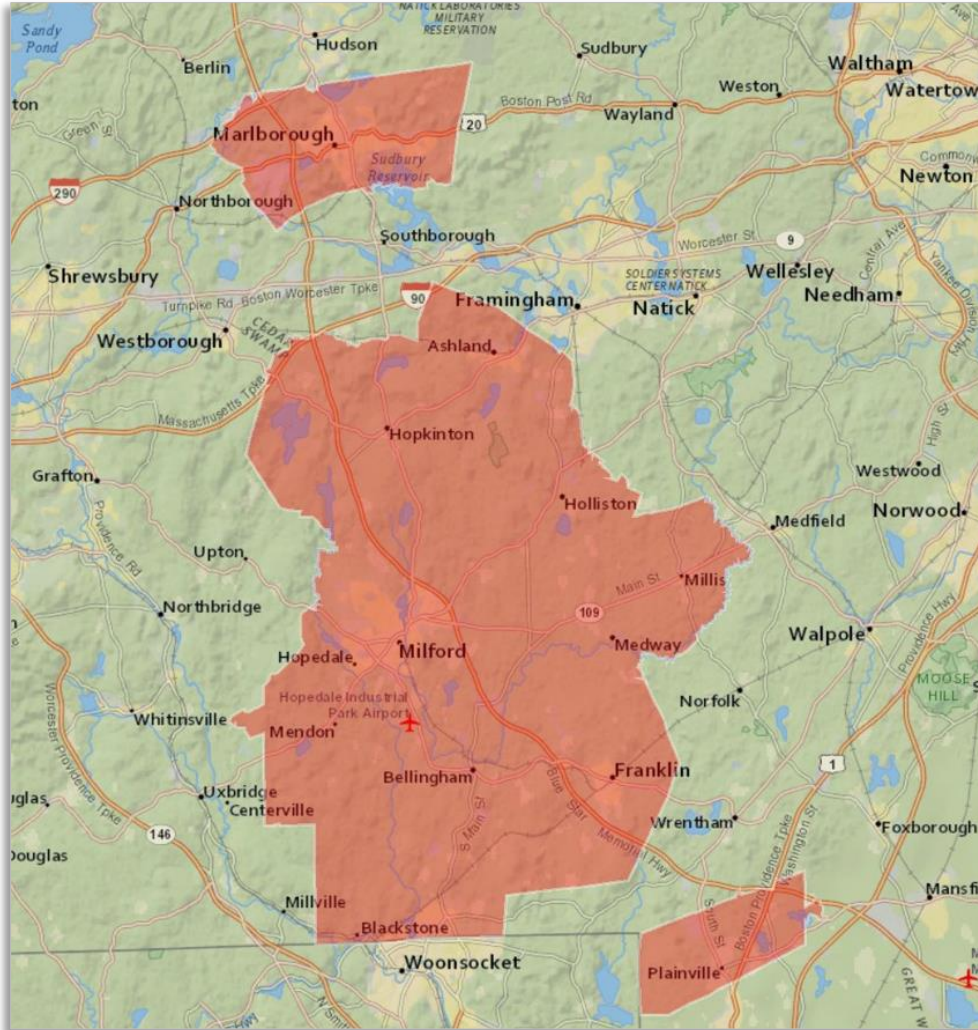


Communities / Towns Served

| | |
|--------------|----|
| Lakeville | MA |
| Marion | MA |
| Mattapoisett | MA |
| Middleboro | MA |
| Rochester | MA |



Milford Zone

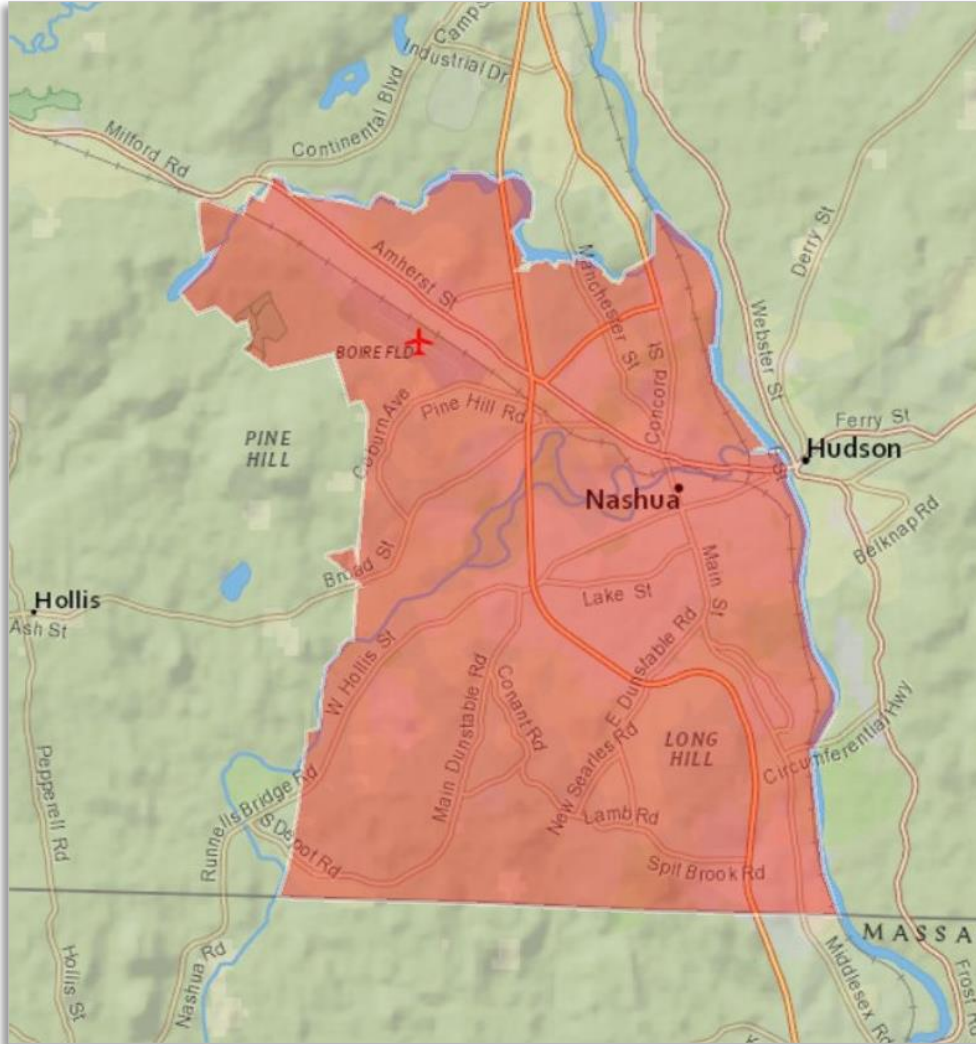


Communities / Towns Served

| | |
|-------------|----|
| Ashland | MA |
| Bellingham | MA |
| Blackstone | MA |
| Franklin | MA |
| Holliston | MA |
| Hopedale | MA |
| Hopkinton | MA |
| Marlborough | MA |
| Medway | MA |
| Mendon | MA |
| Milford | MA |
| Millis | MA |
| Plainville | MA |



Nashua Zone

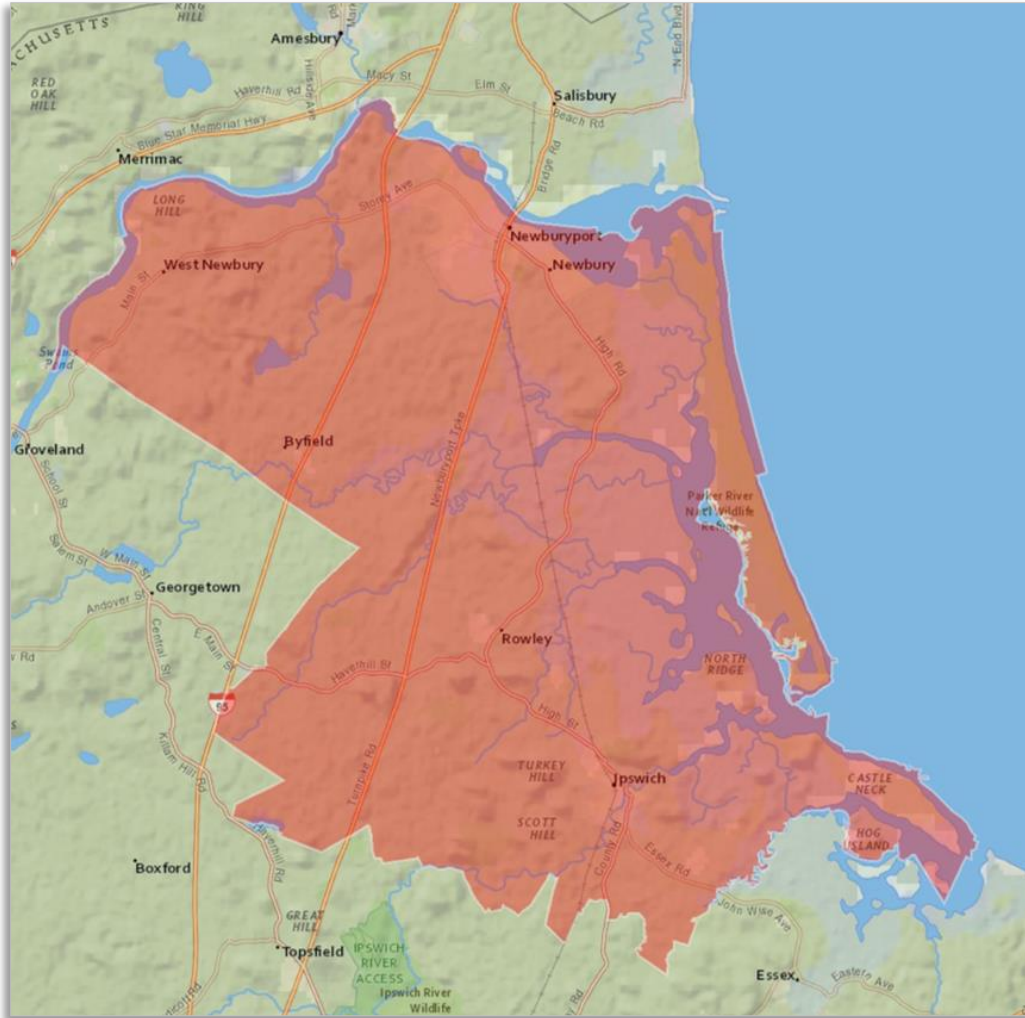


Communities / Towns Served

Nashua NH



Newburyport Zone

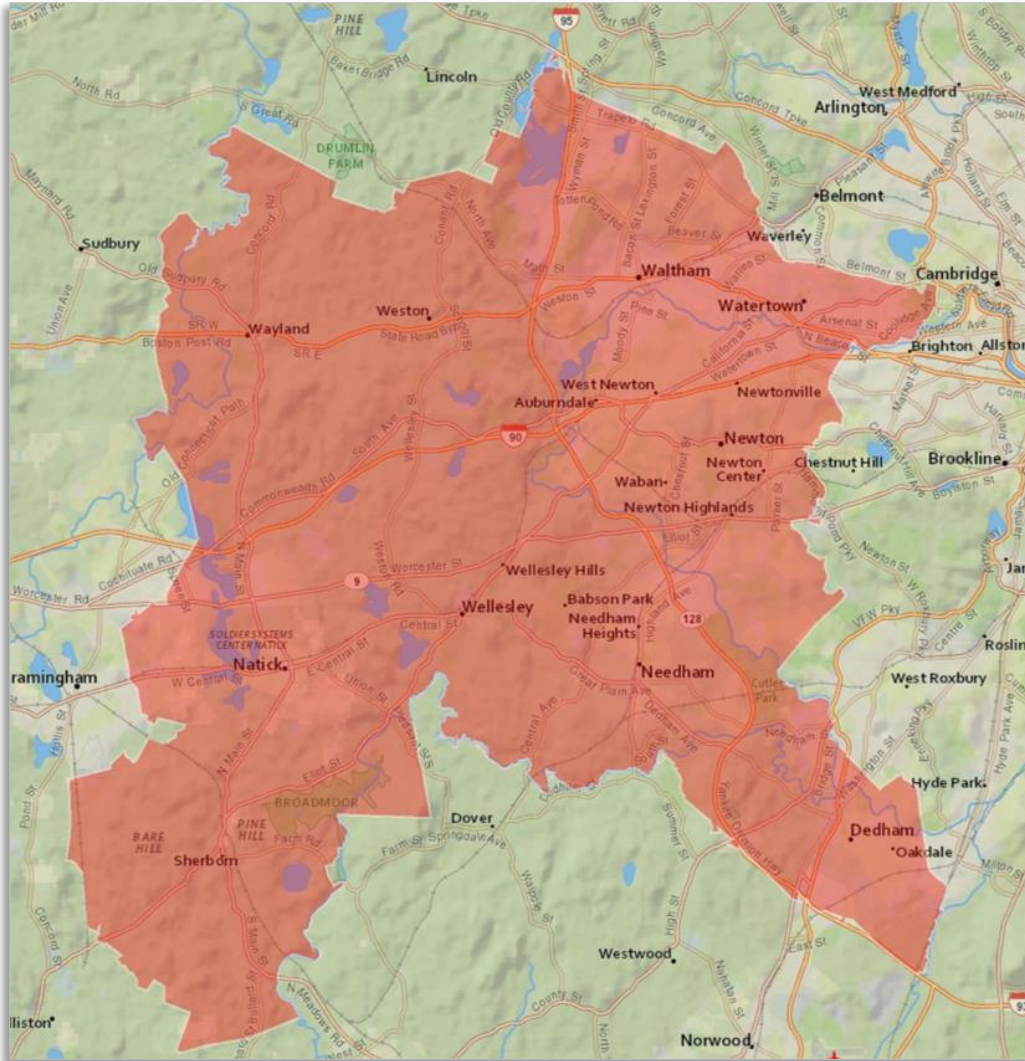


Communities / Towns Served

- | | |
|--------------|----|
| Byfield | MA |
| Ipswich | MA |
| Newbury | MA |
| Newburyport | MA |
| Rowley | MA |
| West Newbury | MA |



Newton Zone

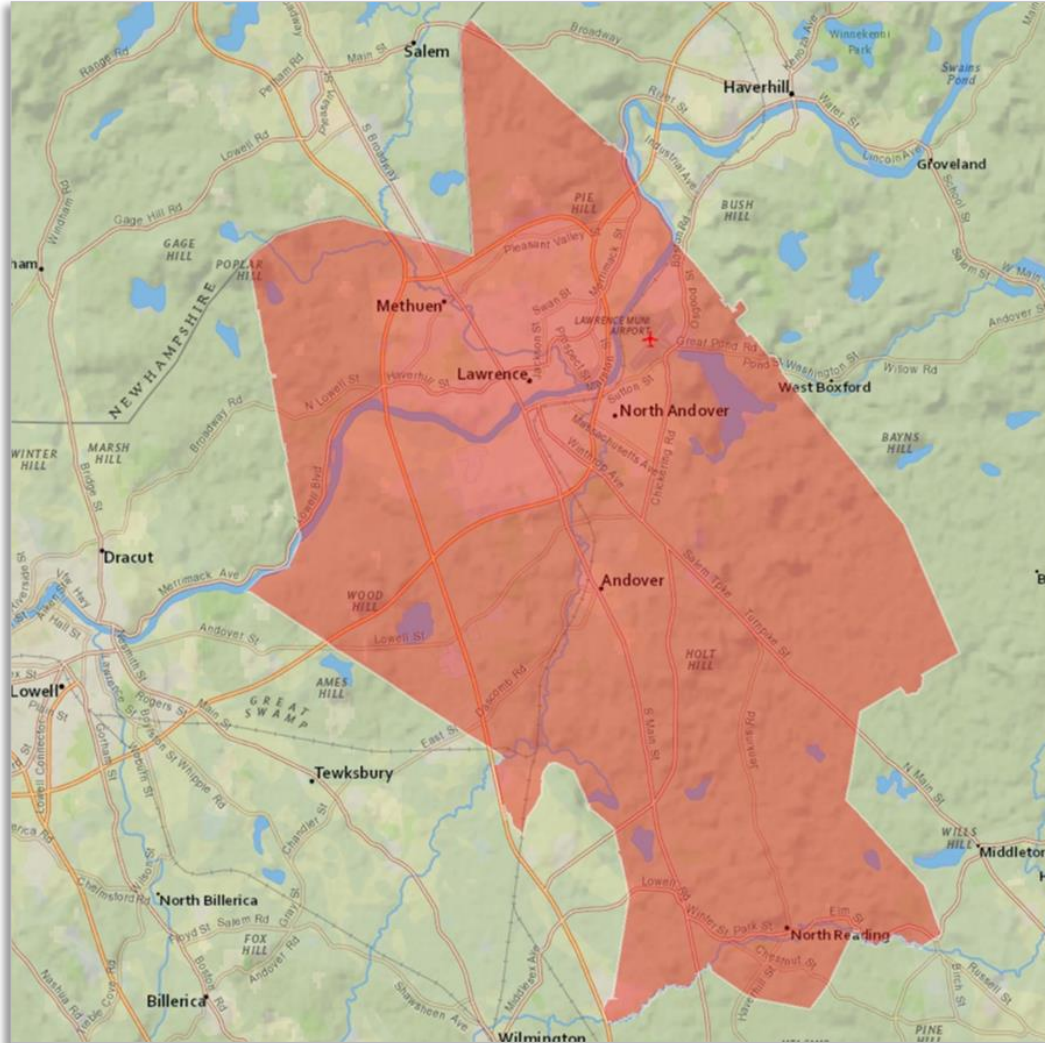


Communities / Towns Served

- Auburndale MA
- Babson Park MA
- Dedham MA
- Natick MA
- Needham MA
- Needham Heights MA
- Newton MA
- Newton Center MA
- Newton Highlands MA
- Newton Lower Falls MA
- Newton Upper Falls MA
- Newtonville MA
- Nonantum MA
- North Waltham MA
- Sherborn MA
- Waban MA
- Waltham MA
- Watertown MA
- Wayland MA
- Wellesley MA
- Wellesley Hills MA
- West Newton MA
- Weston MA



North Andover Zone



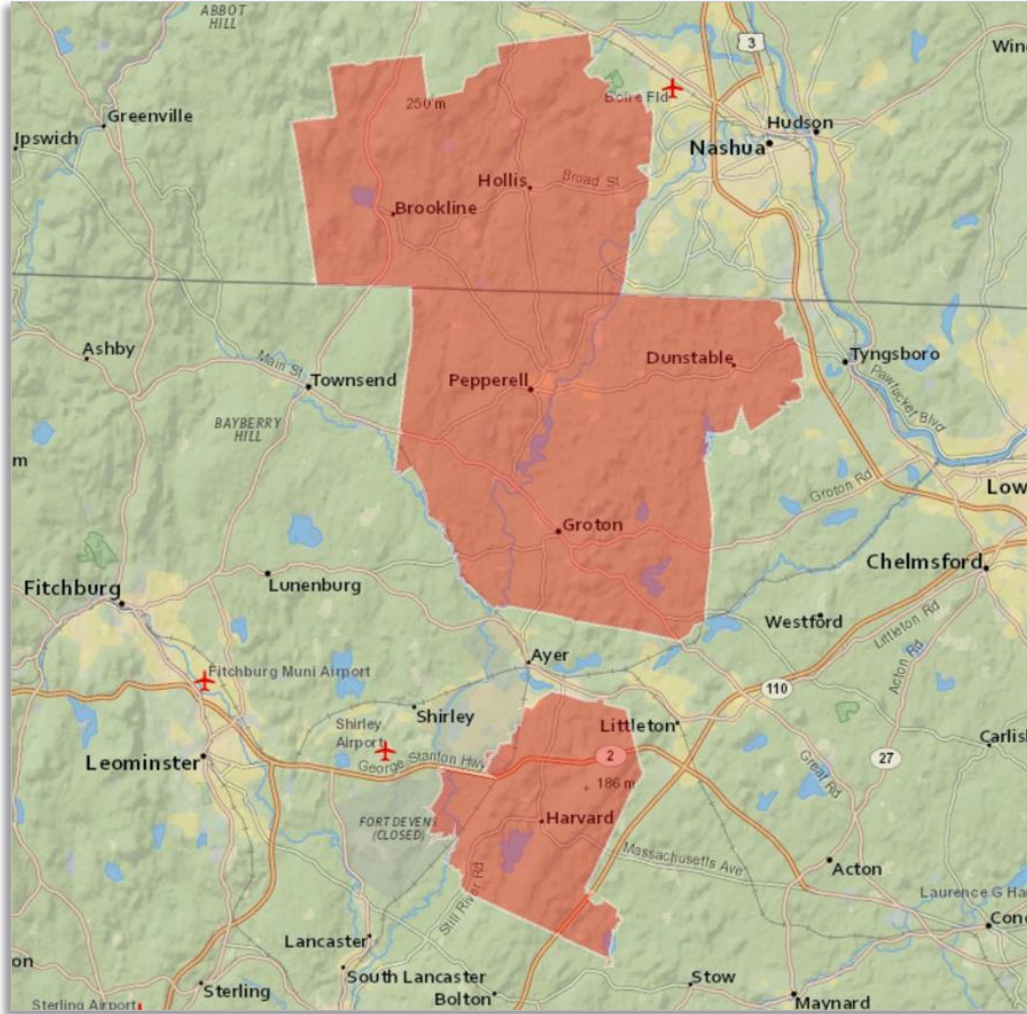
Communities / Towns Served



- Andover MA
- Lawrence MA
- Methuen MA
- North Andover MA
- North Reading MA



Pepperell Zone



Communities / Towns Served

| | |
|-------------|----|
| Brookline | NH |
| Dunstable | MA |
| Groton | MA |
| Harvard | MA |
| Hollis | NH |
| Pepperell | MA |
| West Groton | MA |



Plymouth Zone



Communities / Towns Served

Towns:

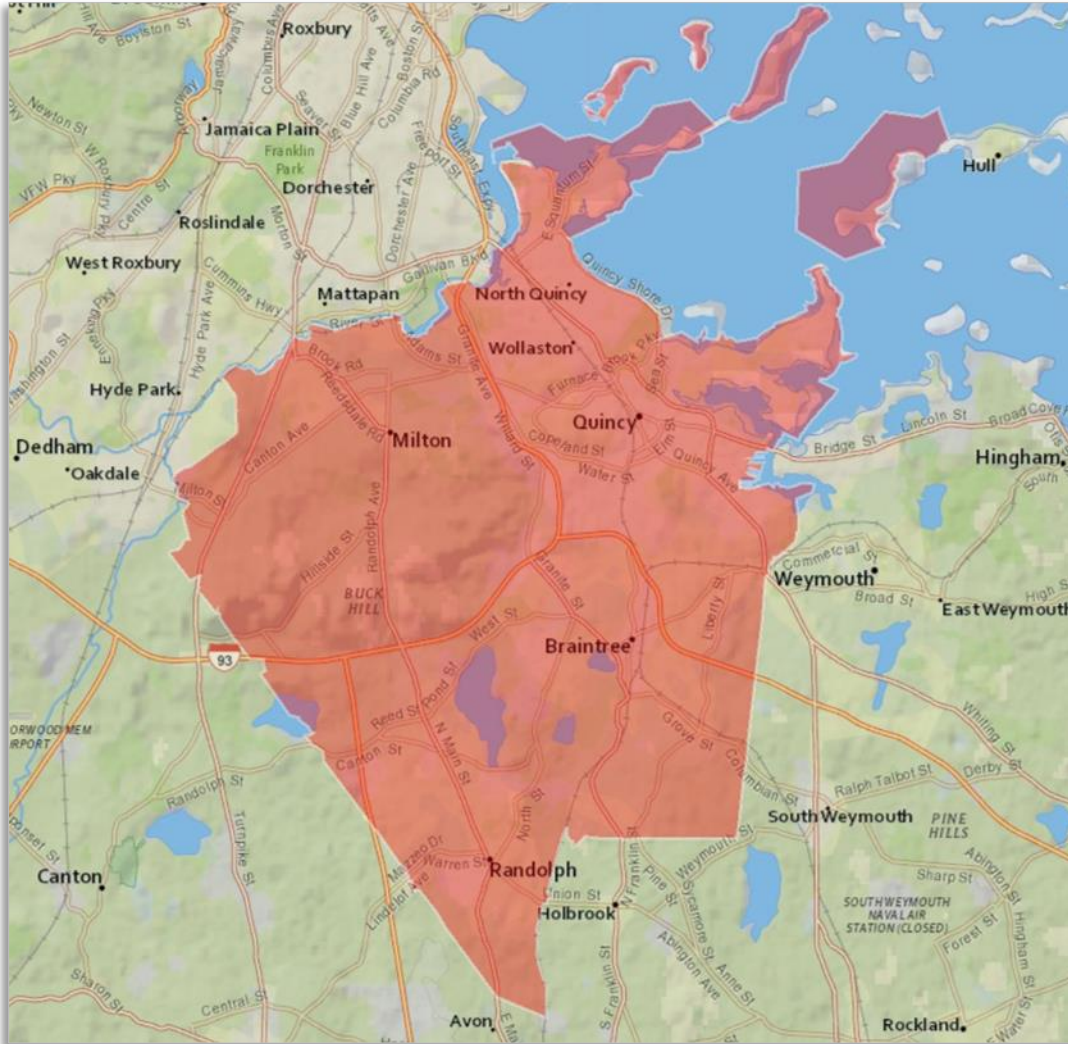
| | | | |
|------------------|----|-------------------|----|
| Abington | MA | North Carver | MA |
| Brant Rock | MA | North Marshfield | MA |
| Bryantville | MA | North Pembroke | MA |
| Carver | MA | Ocean Bluff | MA |
| Duxbury | MA | Pembroke | MA |
| Green Harbor | MA | Plymouth | MA |
| Halifax | MA | Plympton | MA |
| Kingston | MA | Rockland | MA |
| Manomet | MA | South Carver | MA |
| Marshfield | MA | White Horse Beach | MA |
| Marshfield Hills | MA | | |

Expanded Towns:

| | | | |
|---------------|----|---------------|----|
| Assonet | MA | Marion | MA |
| Cohasset | MA | Mattapoisett | MA |
| East Freetown | MA | Middleborough | MA |
| East Wareham | MA | Minot | MA |
| Greenbush | MA | Norwell | MA |
| Hanover | MA | Rochester | MA |
| Hingham | MA | Wareham | MA |
| Hull | MA | West Wareham | MA |
| Lakeville | MA | | |



Quincy Zone

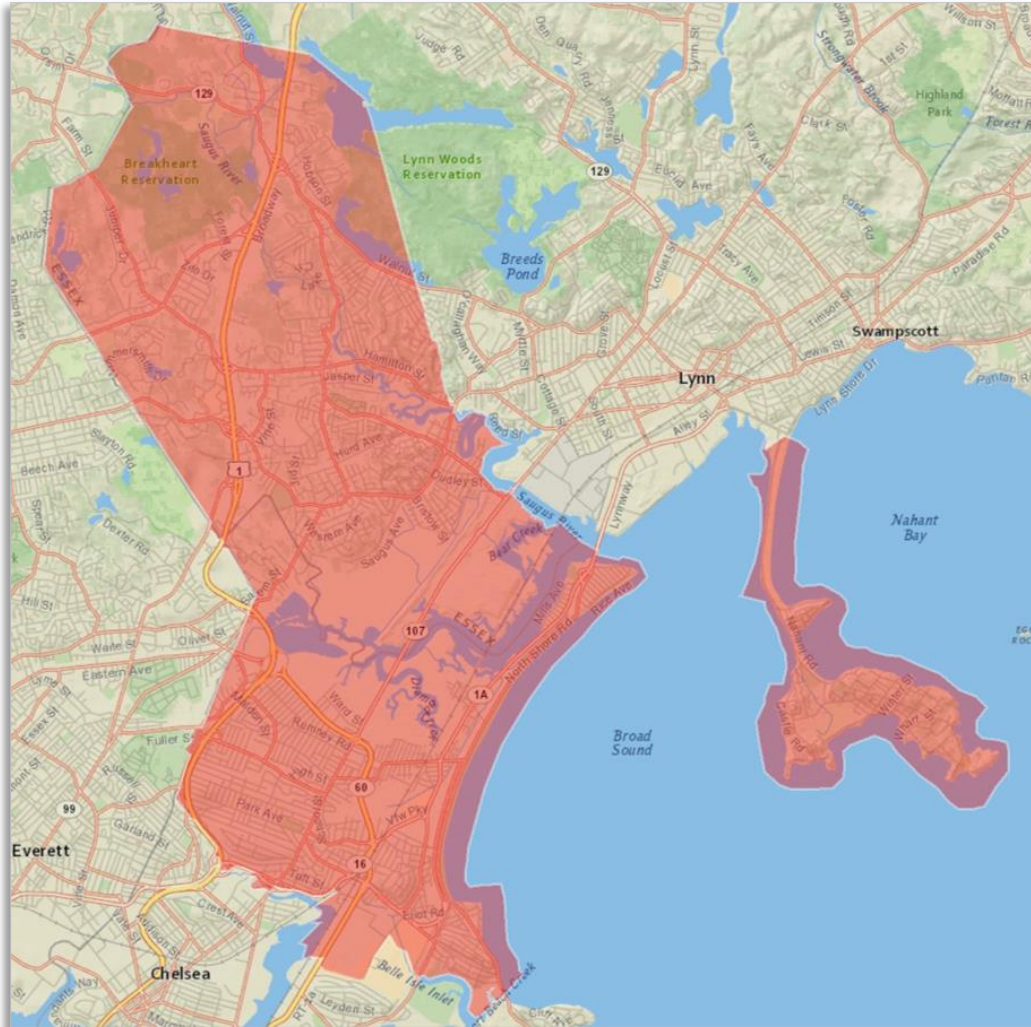


Communities / Towns Served

| | |
|-----------|----|
| Braintree | MA |
| Milton | MA |
| Quincy | MA |
| Randolph | MA |



Revere Zone

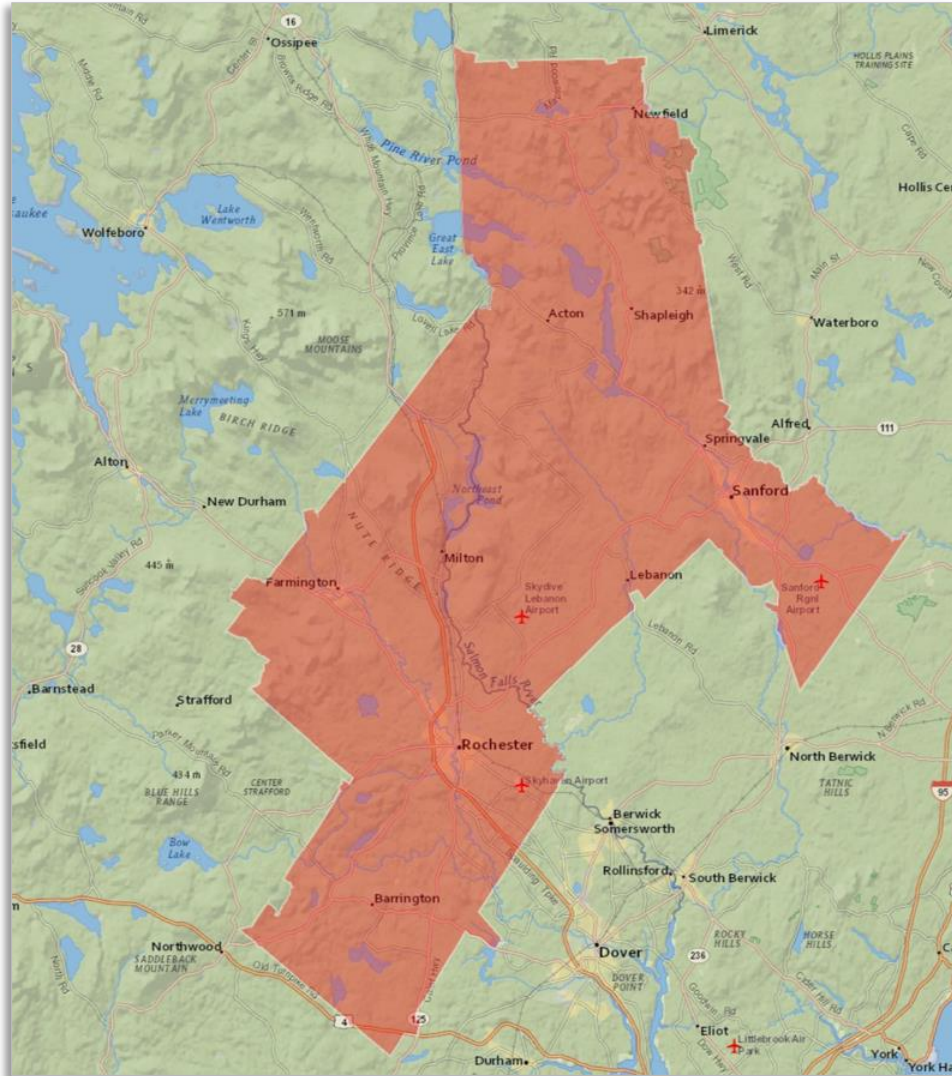


Communities / Towns Served

| | |
|--------|----|
| Nahant | MA |
| Revere | MA |
| Saugus | MA |



Rochester-Sanford Zone

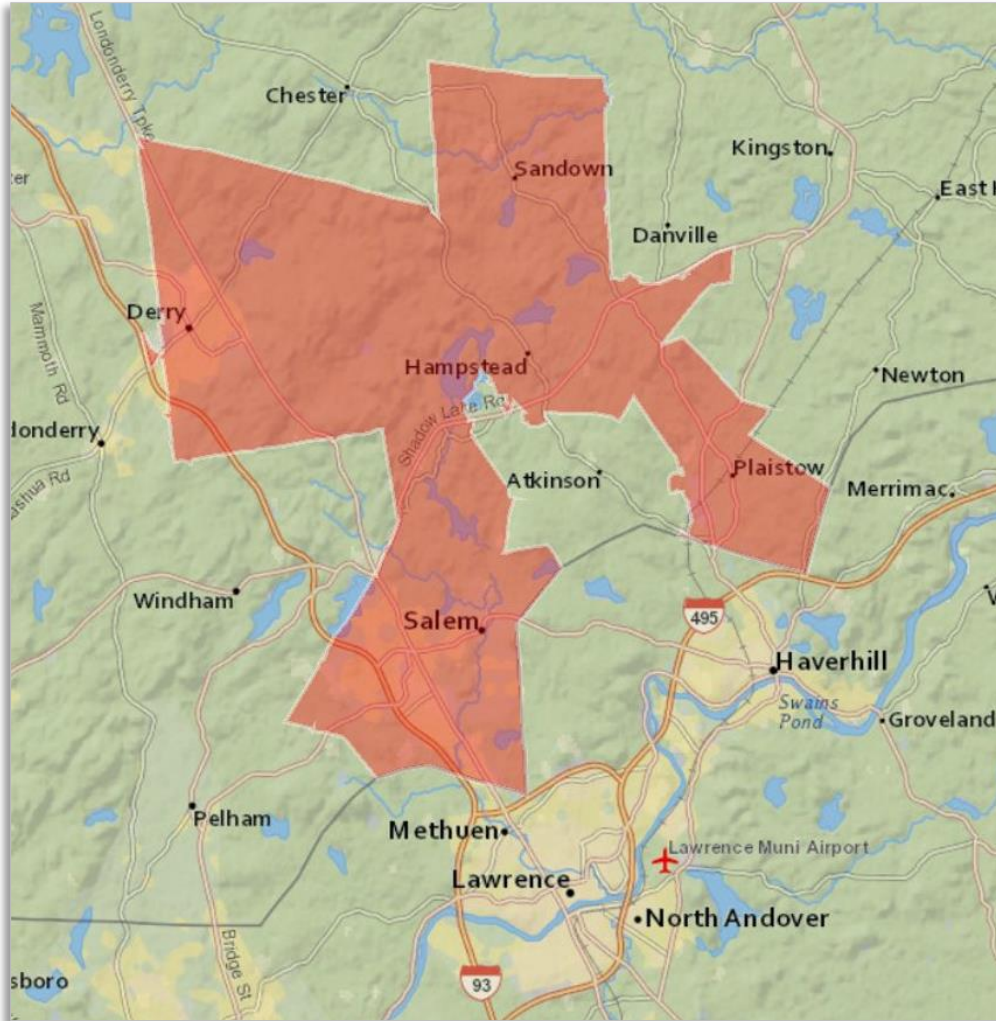


Communities / Towns Served

| | |
|------------------|----|
| Acton | ME |
| Barrington | NH |
| Center Strafford | NH |
| Farmington | NH |
| Lebanon | ME |
| Milton | NH |
| Milton Mills | NH |
| Rochester | NH |
| Sanford | ME |
| Shapleigh | ME |
| Springvale | ME |
| West Newfield | ME |



Salem Zone

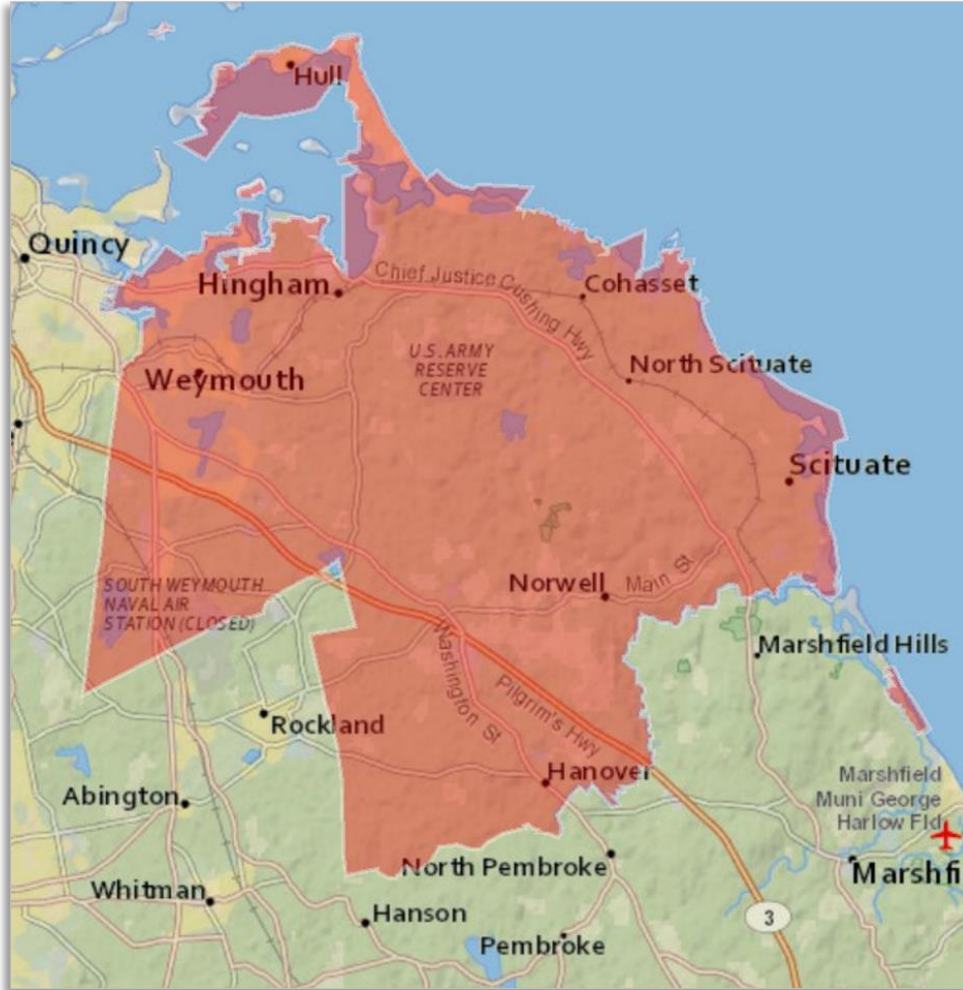


Communities / Towns Served

| | |
|----------------|----|
| Derry | NH |
| East Derry | NH |
| East Hampstead | NH |
| Hampstead | NH |
| North Salem | NH |
| Plaistow | NH |
| Salem | NH |
| Sandown | NH |



Scituate Zone

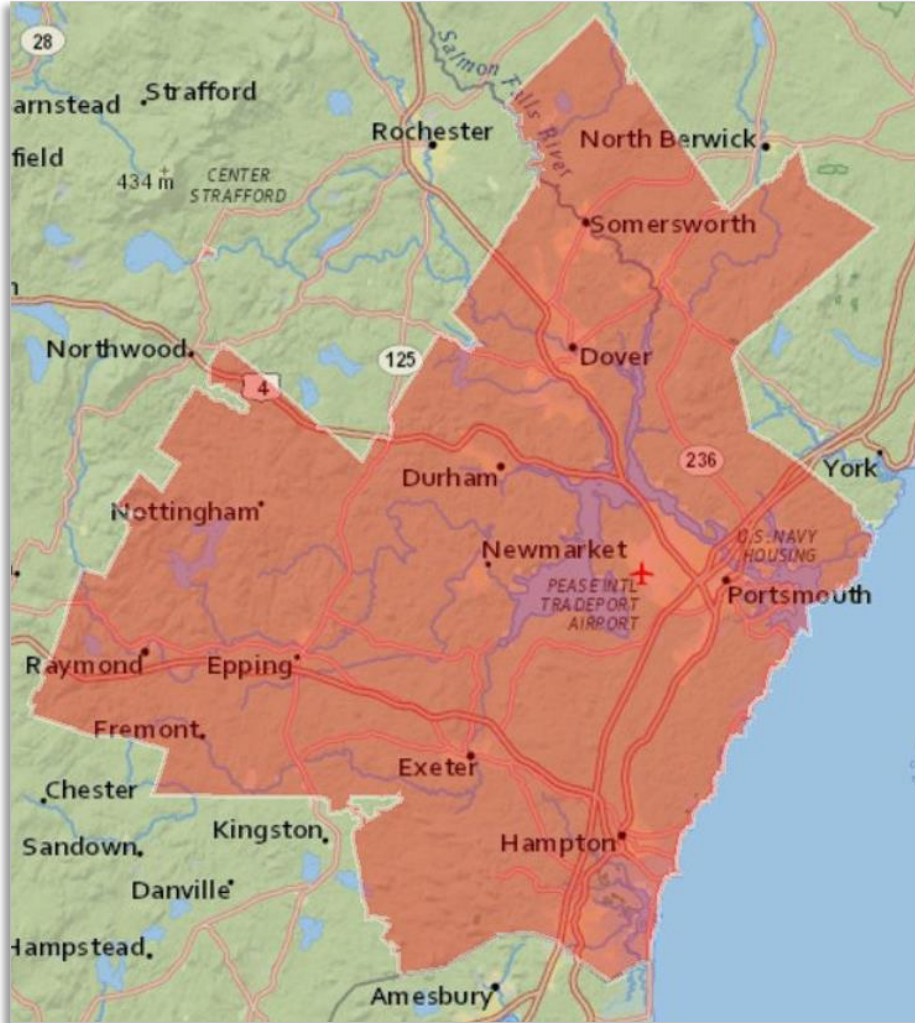


Communities / Towns Served

| | |
|----------------|----|
| Accord | MA |
| Cohasset | MA |
| East Weymouth | MA |
| Greenbush | MA |
| Hanover | MA |
| Hingham | MA |
| Hull | MA |
| Humarock | MA |
| Minot | MA |
| North Scituate | MA |
| North Weymouth | MA |
| Norwell | MA |
| Scituate | MA |
| South Weymouth | MA |
| Weymouth | MA |



Seacoast Zone

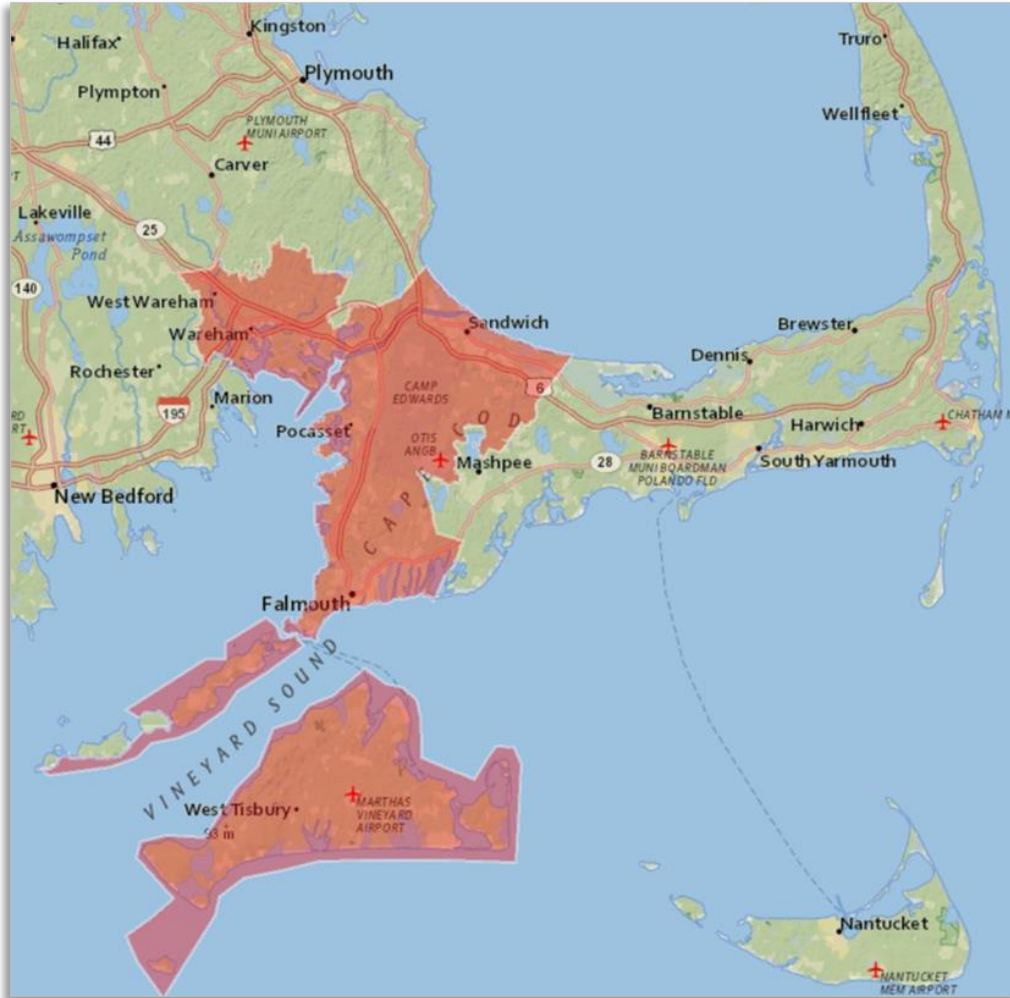


Communities / Towns Served

| | | | |
|---------------|----|-----------------|----|
| Berwick | ME | Newfields | NH |
| Dover | NH | Newington | NH |
| Durham | NH | Newmarket | NH |
| East Kingston | NH | North Hampton | NH |
| Eliot | ME | Nottingham | NH |
| Epping | NH | Portsmouth | NH |
| Exeter | NH | Raymond | NH |
| Fremont | NH | Rollinsford | NH |
| Greenland | NH | Rye | NH |
| Hampton | NH | Rye Beach | NH |
| Hampton Falls | NH | Seabrook | NH |
| Kittery | ME | Somersworth | NH |
| Kittery Point | ME | South Berwick | ME |
| Lee | NH | South Hampton | NH |
| Madbury | NH | Stratham | NH |
| New Castle | NH | West Nottingham | NH |



Upper Cape & Island Zone

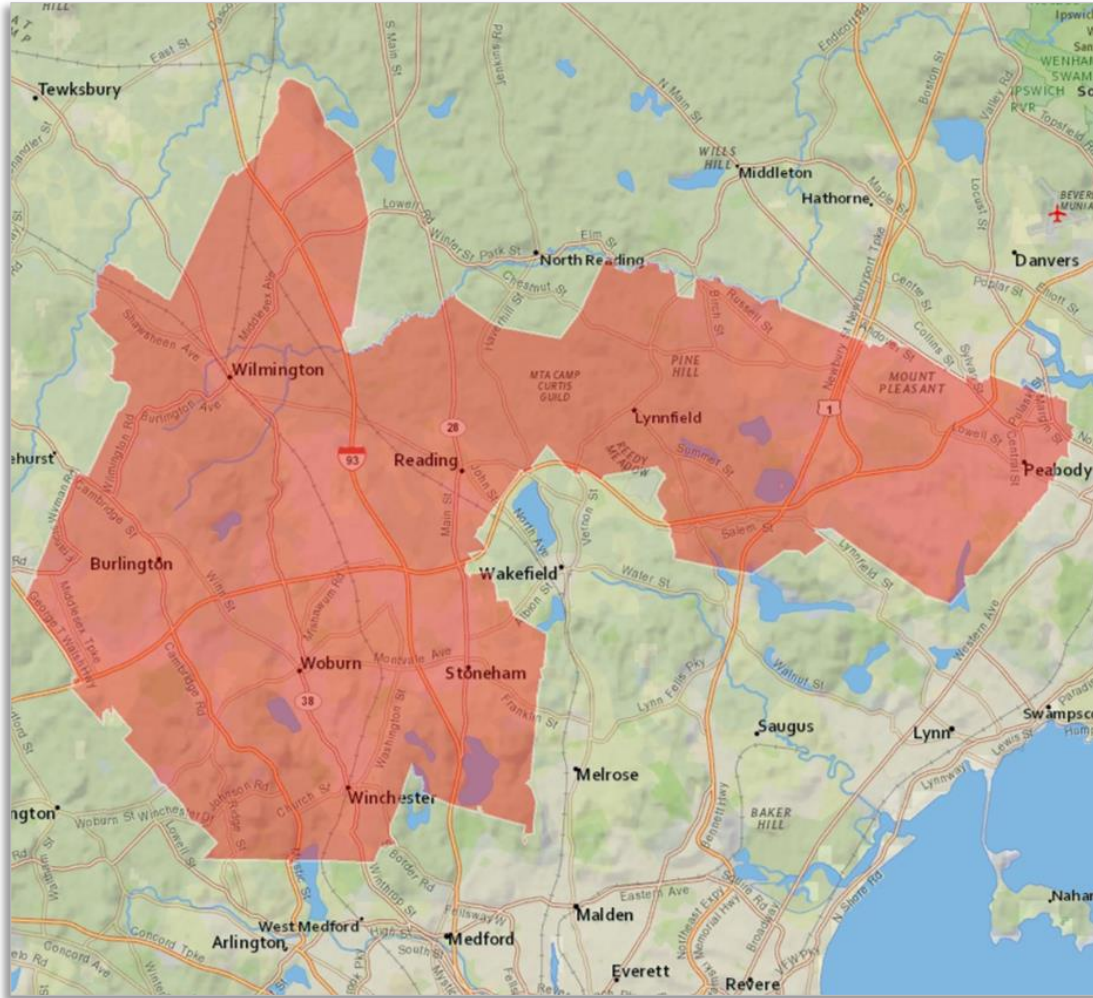


Communities / Towns Served

| | | | |
|----------------|----|----------------|----|
| Buzzards Bay | MA | Onset | MA |
| Cataumet | MA | Pocasset | MA |
| Chilmark | MA | Sagamore | MA |
| East Falmouth | MA | Sagamore Beach | MA |
| East Sandwich | MA | Sandwich | MA |
| East Wareham | MA | Silver Beach | MA |
| Edgartown | MA | Vineyard Haven | MA |
| Falmouth | MA | Wareham | MA |
| Forestdale | MA | West Chop | MA |
| Menemsha | MA | West Falmouth | MA |
| Monument Beach | MA | West Tisbury | MA |
| North Falmouth | MA | West Wareham | MA |
| Oak Bluffs | MA | Woods Hole | MA |



Woburn Zone



Communities / Towns Served

| | |
|------------|----|
| Burlington | MA |
| Lynnfield | MA |
| Peabody | MA |
| Reading | MA |
| Stoneham | MA |
| Wilmington | MA |
| Winchester | MA |
| Woburn | MA |



Worcester Zone



Communities / Towns Served

Towns:

| | | | |
|------------------|----|-----------------|----|
| Auburn | MA | North Uxbridge | MA |
| Barre | MA | Northborough | MA |
| Berlin | MA | Northbridge | MA |
| Boylston | MA | Oakham | MA |
| Brookfield | MA | Oxford | MA |
| Charlton | MA | Paxton | MA |
| Charlton City | MA | Petersham | MA |
| Charlton Depot | MA | Rochdale | MA |
| Cherry Valley | MA | Rutland | MA |
| Douglas | MA | South Barre | MA |
| Dudley | MA | South Grafton | MA |
| East Brookfield | MA | Southborough | MA |
| Fayville | MA | Southbridge | MA |
| Fiskdale | MA | Spencer | MA |
| Grafton | MA | Sturbridge | MA |
| Holden | MA | Sutton | MA |
| Hubbardston | MA | Upton | MA |
| Jefferson | MA | Uxbridge | MA |
| Leicester | MA | Webster | MA |
| Linwood | MA | West Boylston | MA |
| Manchaug | MA | West Brookfield | MA |
| Millbury | MA | West Millbury | MA |
| Millville | MA | Westborough | MA |
| North Brookfield | MA | Whitinsville | MA |
| North Grafton | MA | Worcester | MA |
| North Oxford | MA | | |

Expanded Towns: Shrewsbury MA